

SAFE HARBOUR VILLAGE PHASE-1

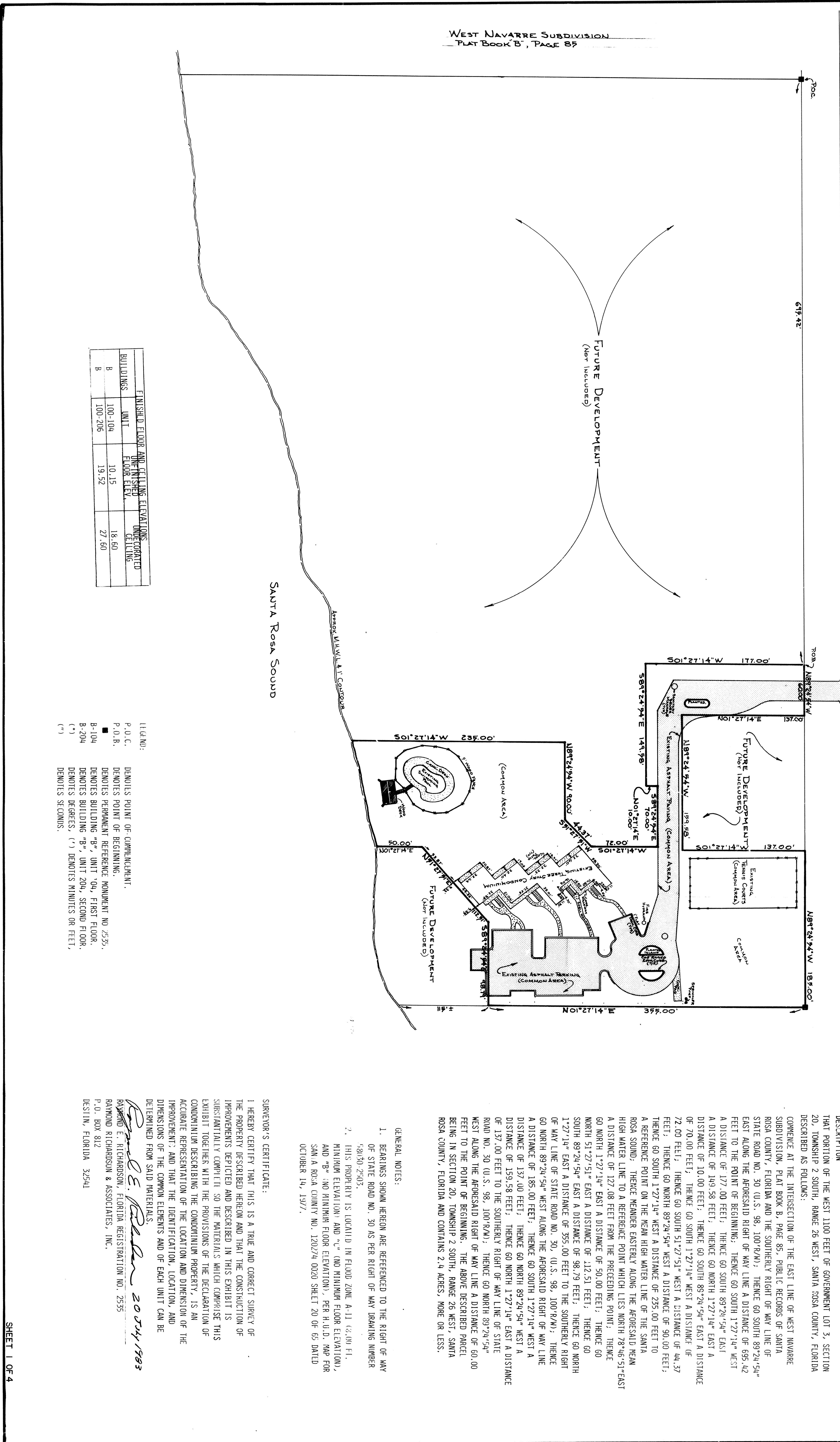
A CONDOMINIUM

IN SECTION 20, TOWNSHIP 2 SOUTH, RANGE 26 WEST, SANTA ROSA COUNTY, FLORIDA

GRAPHIC SCALE 1"=50'

STATE Rta 30, (U.S. 98, 100' R/W)

WEST NAVARRE SUBDIVISION
PLAT BOOK B, PAGE 88



BUILDINGS	UNIT	FINISHED FLOOR AND CEILING ELEVATIONS	MINIMUM FLOOR ELEVATION	MINIMUM CEILING ELEVATION
B	100-104	10.15	18.60	
B	100-206	19.52	27.60	

- (1) G.M.N.:
- P.O.C. DENOTES POINT OF COMMENCEMENT.
 - P.O.B. DENOTES POINT OF BEGINNING.
 - DENOTES PERMANENT REFERENCE MONUMENT NO. 2535.
 - B-104 DENOTES BUILDING "B", UNIT 04, FIRST FLOOR.
 - B-204 DENOTES BUILDING "B", UNIT 204, SECOND FLOOR.
 - (*) DENOTES DEGREES; (') DENOTES MINUTES OR FEET.
 - (") DENOTES SECONDS.

DESCRIPTION
THAT PORTION OF THE WEST 1100 FEET OF GOVERNMENT LOT 3, SECTION 20, TOWNSHIP 2 SOUTH, RANGE 26 WEST, SANTA ROSA COUNTY, FLORIDA DESCRIBED AS FOLLOWS:

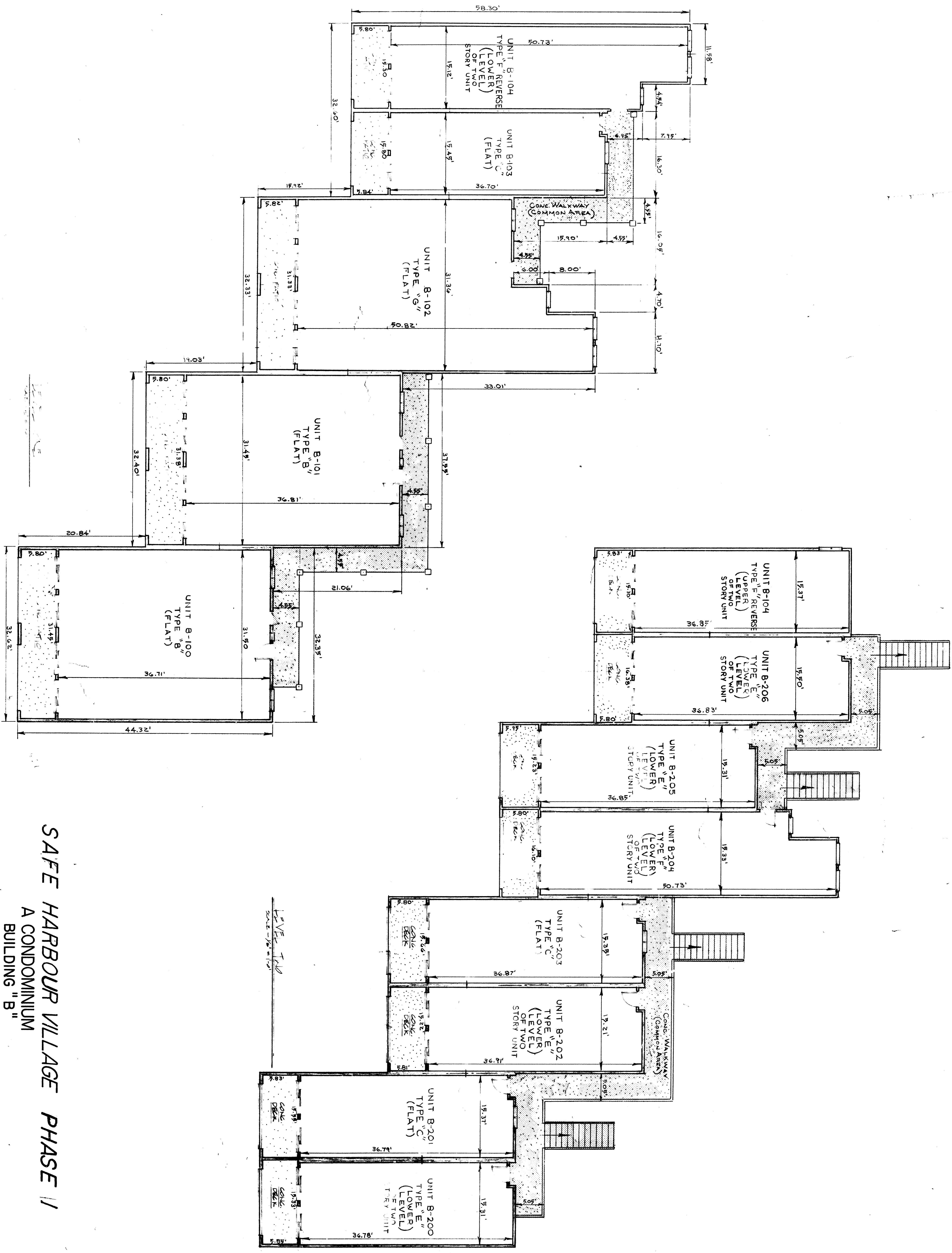
COMMENCE AT THE INTERSECTION OF THE EAST LINE OF WEST NAVARRE SUBDIVISION, PLAT BOOK B, PAGE 85, PUBLIC RECORDS OF SANTA ROSA COUNTY, FLORIDA AND THE SOUTHERLY RIGHT OF WAY LINE OF STATE ROAD NO. 30 (U.S. 98, 100' R/W); THENCE GO SOUTH 89°24'54" EAST ALONG THE AFORESAID RIGHT OF WAY LINE A DISTANCE OF 695.42 FEET TO THE POINT OF BEGINNING; THENCE GO SOUTH 1°27'14" WEST A DISTANCE OF 177.00 FEET; THENCE GO SOUTH 89°24'54" EAST A DISTANCE OF 149.58 FEET; THENCE GO NORTH 1°27'14" EAST A DISTANCE OF 10.00 FEET; THENCE GO SOUTH 89°24'54" EAST A DISTANCE OF 70.00 FEET; THENCE GO SOUTH 1°27'14" WEST A DISTANCE OF 72.00 FEET; THENCE GO SOUTH 51°27'51" WEST A DISTANCE OF 44.37 FEET; THENCE GO NORTH 89°24'54" WEST A DISTANCE OF 90.00 FEET; THENCE GO SOUTH 1°27'14" WEST A DISTANCE OF 235.00 FEET TO A REFERENCE POINT ON THE MEAN HIGH WATER LINE OF THE SANTA ROSA SOUND; THENCE MEANDER EASTERLY ALONG THE AFORESAID MEAN HIGH WATER LINE TO A REFERENCE POINT WHICH LIES NORTH 78°46'51" EAST A DISTANCE OF 127.08 FEET FROM THE PRECEDING POINT; THENCE GO NORTH 1°27'14" EAST A DISTANCE OF 50.00 FEET; THENCE GO NORTH 51°27'51" EAST A DISTANCE OF 112.51 FEET; THENCE GO SOUTH 89°24'54" EAST A DISTANCE OF 98.79 FEET; THENCE GO NORTH 1°27'14" EAST A DISTANCE OF 355.00 FEET TO THE SOUTHERLY RIGHT OF WAY LINE OF STATE ROAD NO. 30 (U.S. 98, 100' R/W); THENCE GO NORTH 89°24'54" WEST ALONG THE AFORESAID RIGHT OF WAY LINE A DISTANCE OF 185.00 FEET; THENCE GO SOUTH 1°27'14" WEST A DISTANCE OF 137.00 FEET; THENCE GO NORTH 89°24'54" WEST A DISTANCE OF 159.58 FEET; THENCE GO NORTH 1°27'14" EAST A DISTANCE OF 137.00 FEET TO THE SOUTHERLY RIGHT OF WAY LINE OF STATE ROAD NO. 30 (U.S. 98, 100' R/W); THENCE GO NORTH 89°24'54" WEST ALONG THE AFORESAID RIGHT OF WAY LINE A DISTANCE OF 60.00 FEET TO THE POINT OF BEGINNING. THE ABOVE DESCRIBED PARCEL BEING IN SECTION 20, TOWNSHIP 2 SOUTH, RANGE 26 WEST, SANTA ROSA COUNTY, FLORIDA AND CONTAINS 2.4 ACRES, MORE OR LESS.

- GENERAL NOTES:
1. BEARINGS SHOWN HEREON ARE REFERENCED TO THE RIGHT OF WAY OF STATE ROAD NO. 30 AS PER RIGHT OF WAY DRAWING NUMBER 58130-2503.
 2. THIS PROPERTY IS LOCATED IN FLOOD ZONE A-11 (4.00 FT. MINIMUM ELEVATION) AND "C" (NO MINIMUM FLOOR ELEVATION), AND "B" (NO MINIMUM FLOOR ELEVATION), PER F.U.D. MAP FOR SAN A ROSA COUNTY NO. 120274 0020 SHEET 20 OF 65 DATED OCTOBER 14, 1977.

SURVEYOR'S CERTIFICATE:

I HEREBY CERTIFY THAT THIS IS A TRUE AND CORRECT SURVEY OF THE PROPERTY DESCRIBED HEREON AND THAT THE CONSTRUCTION OF IMPROVEMENTS DEPICTED AND DESCRIBED IN THIS EXHIBIT IS SUBSTANTIALLY COMPLETE SO THE MATERIALS WHICH COMPRISE THIS EXHIBIT TOGETHER WITH THE PROVISIONS OF THE DECLARATION OF CONDOMINIUM DESCRIBING THE CONDOMINIUM PROPERTY, IS AN ACCURATE REPRESENTATION OF THE LOCATION AND DIMENSION OF THE IMPROVEMENT; AND THAT THE IDENTIFICATION, LOCATION, AND DIMENSIONS OF THE COMMON ELEMENTS AND OF EACH UNIT CAN BE DETERMINED FROM SAID MATERIALS.

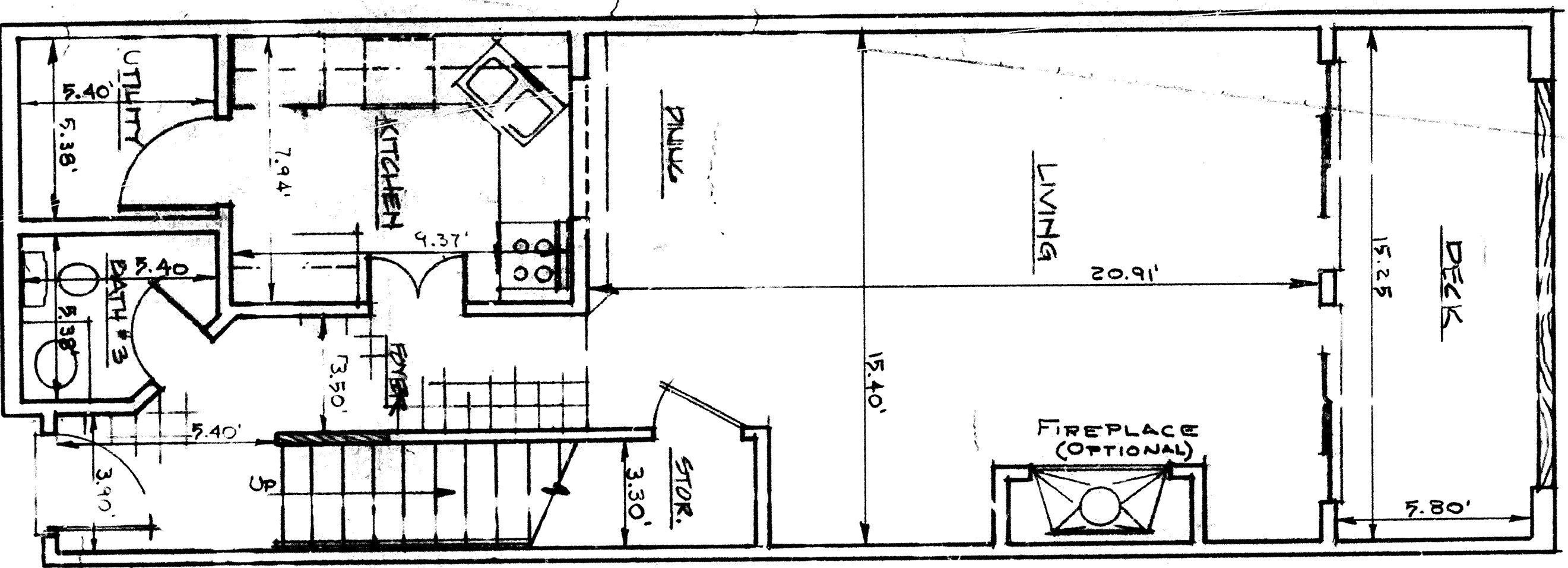
Raymond E. Richardson 20 July 1993
 RAYMOND E. RICHARDSON, FLORIDA REGISTRATION NO. 2535
 RAYMOND RICHARDSON & ASSOCIATES, INC.
 P.O. BOX 812
 DESSIN, FLORIDA 32541



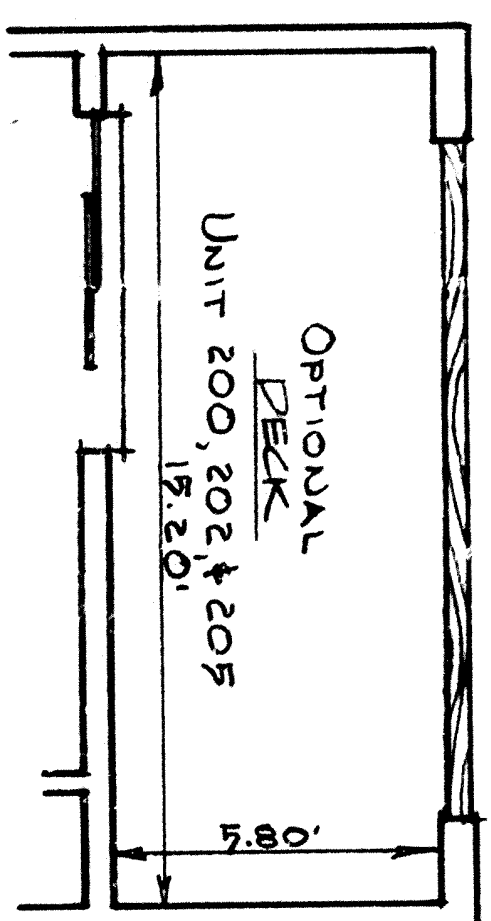
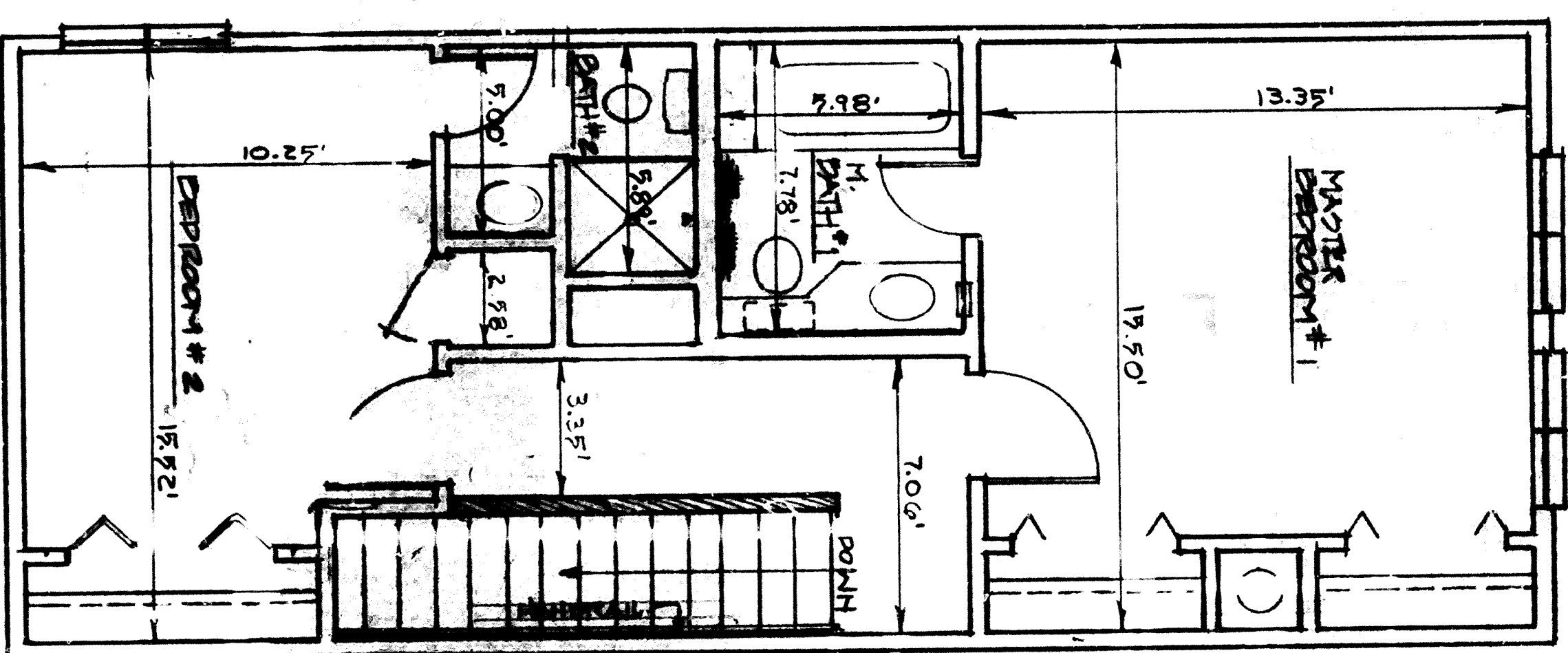
SAFE HARBOUR VILLAGE PHASE II
 A CONDOMINIUM
 BUILDING "B"

SAFE HARBOUR VILLAGE
A CONDOMINIUM
TYPICAL UNIT PLANS

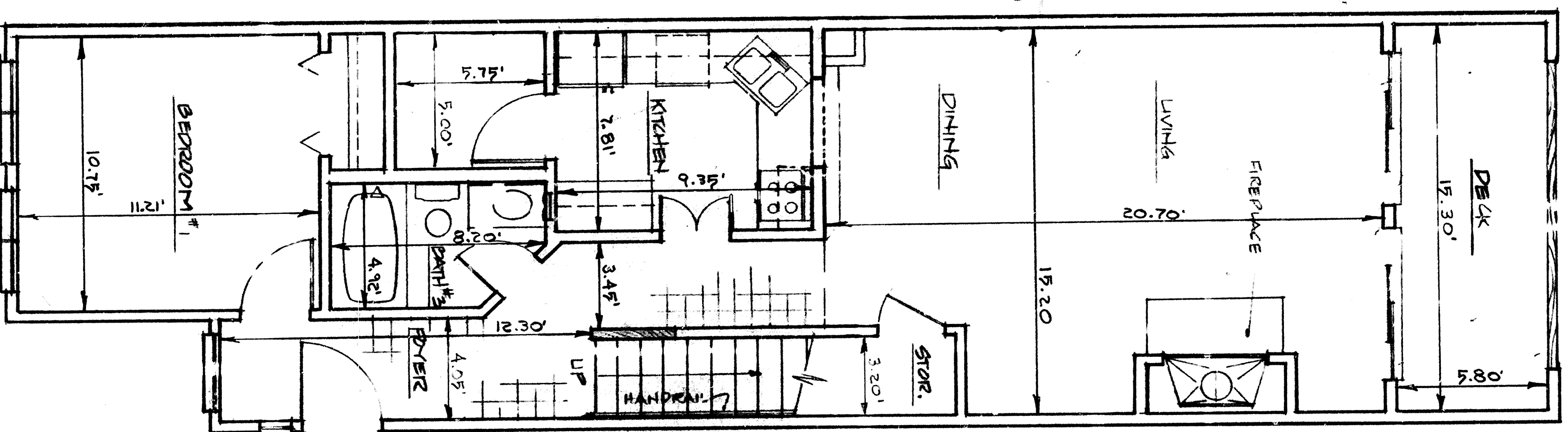
UNIT 'E' - 2 BEDROOM TOWNHOME
UPPER LEVEL
SCALE: 1/4" = 1'-0"



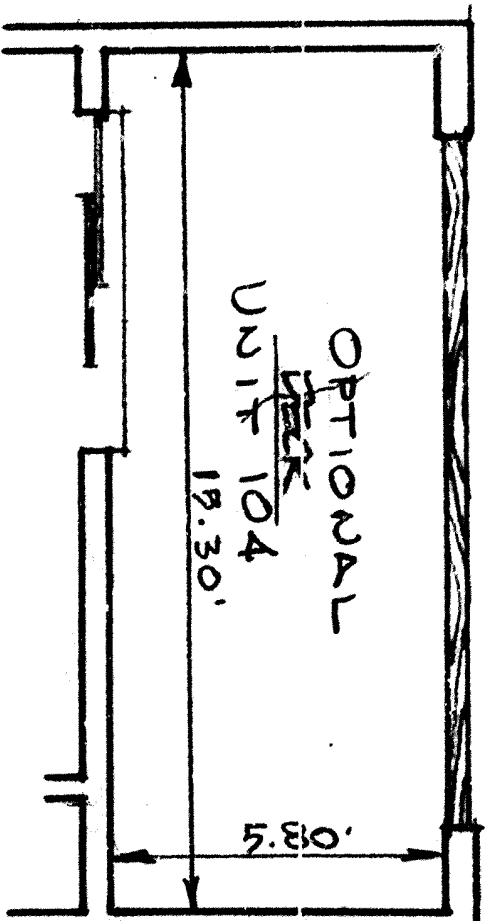
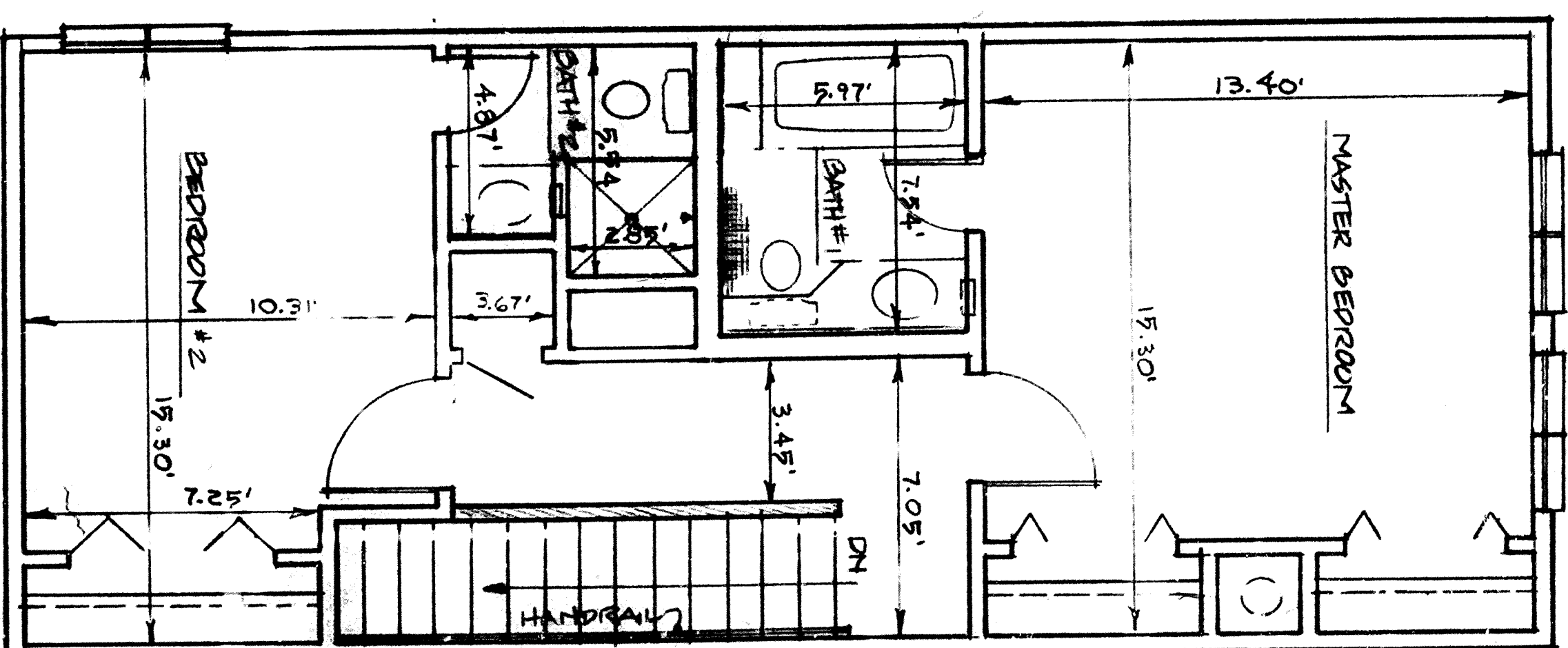
UNIT 'E' - 2 BEDROOM TOWNHOME
UPPER LEVEL
SCALE: 1/4" = 1'-0"

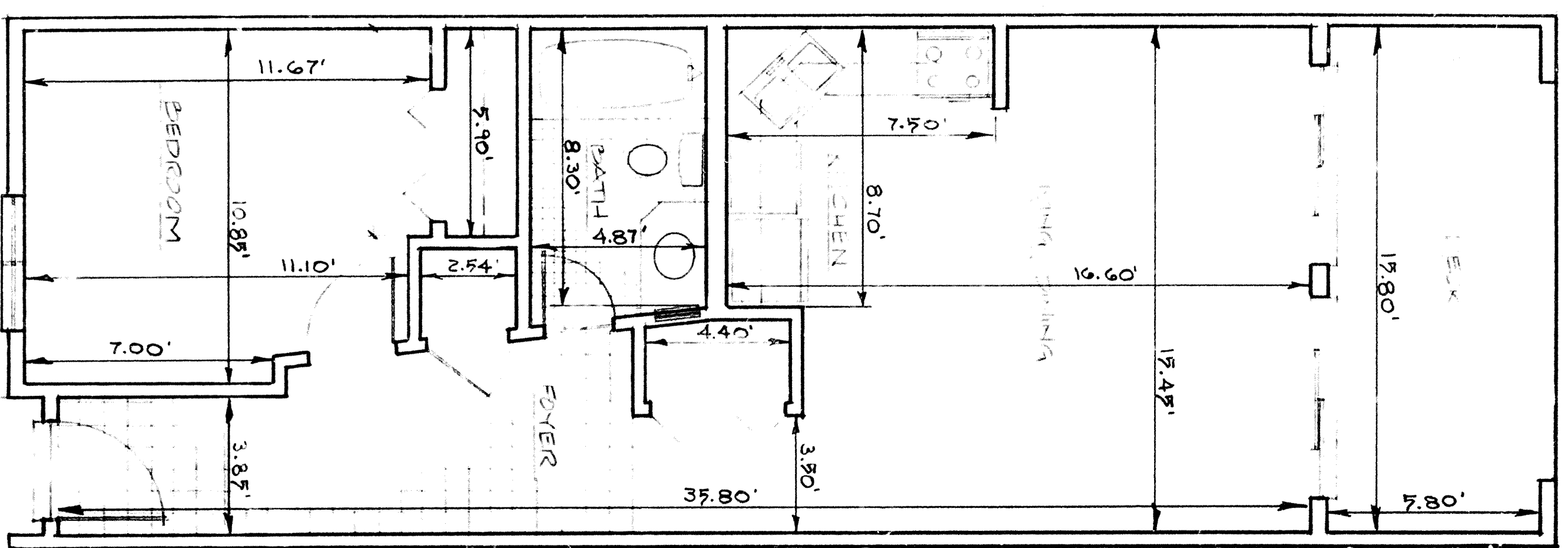


UNIT 'E' - 3 BEDROOM TOWNHOME
LOWER LEVEL
SCALE: 1/4" = 1'-0"

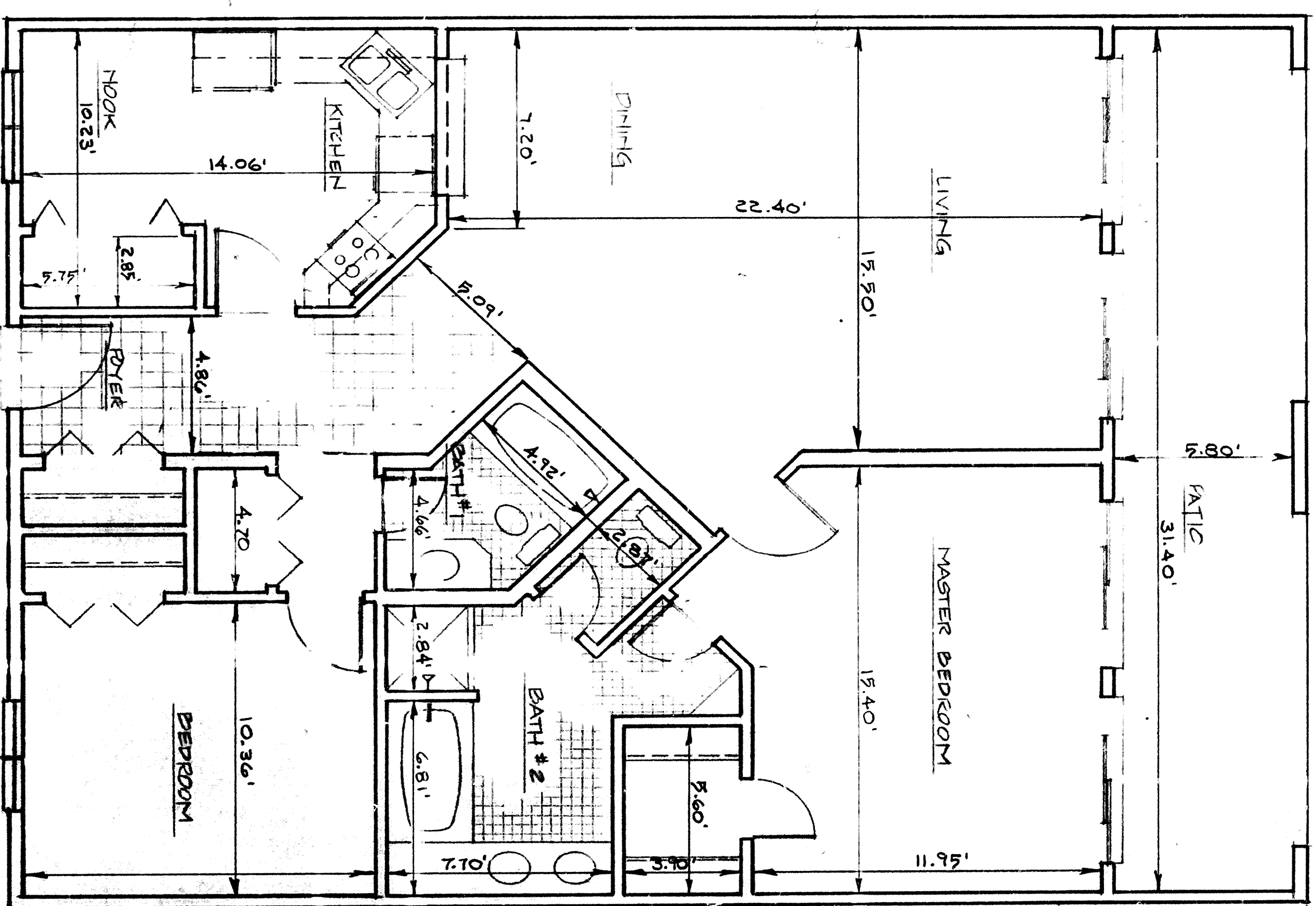


UNIT 'E' - 3 BEDROOM TOWNHOME
UPPER LEVEL
SCALE: 1/4" = 1'-0"

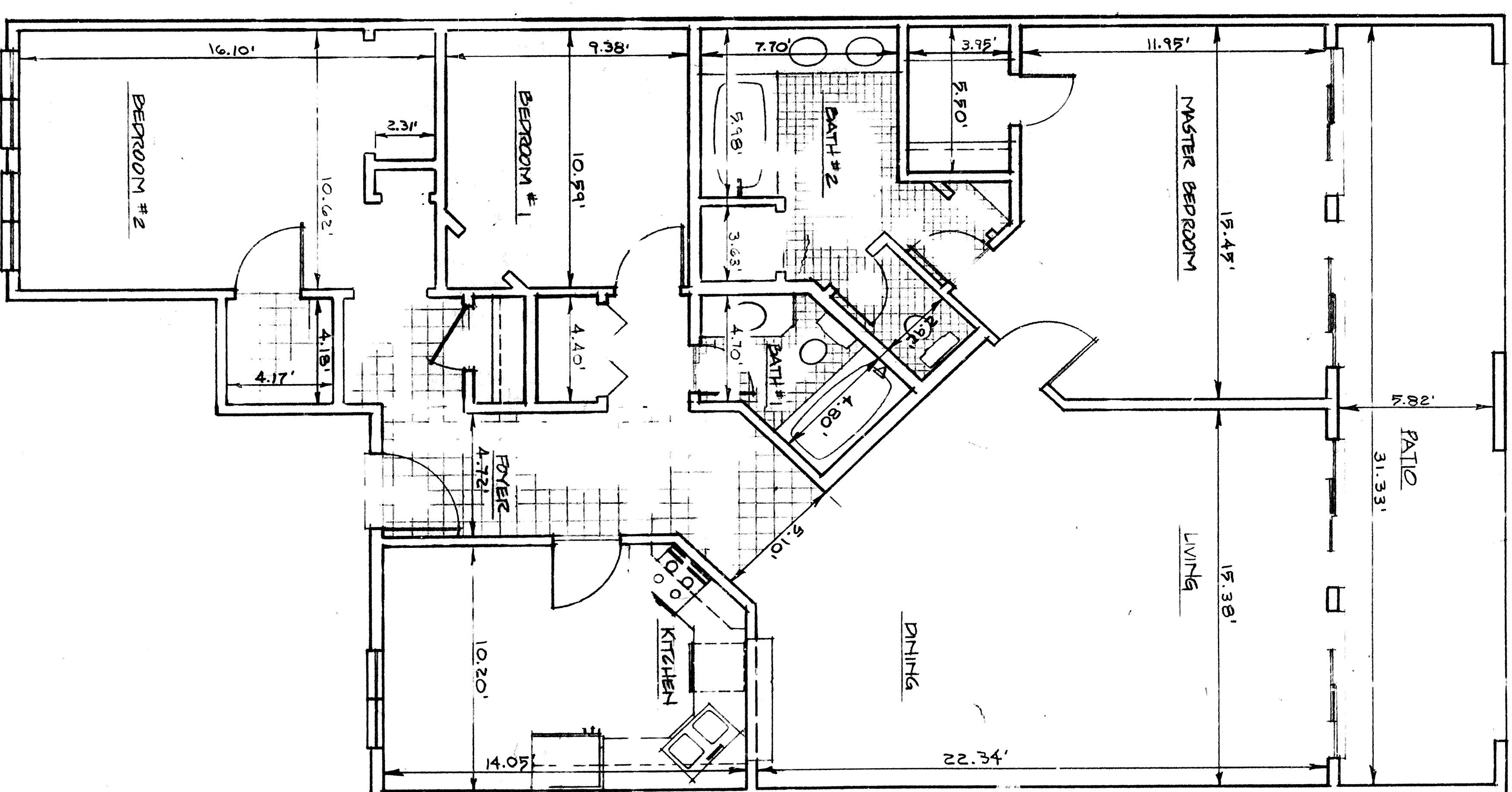




UNIT #1 - 2 BEDROOM FLAT



UNIT #2 - 2 BEDROOM FLAT



UNIT #3 - 3 BEDROOM FLAT

SAFE HARBOUR VILLAGE
A CONDOMINIUM
TYPICAL UNIT PLANS

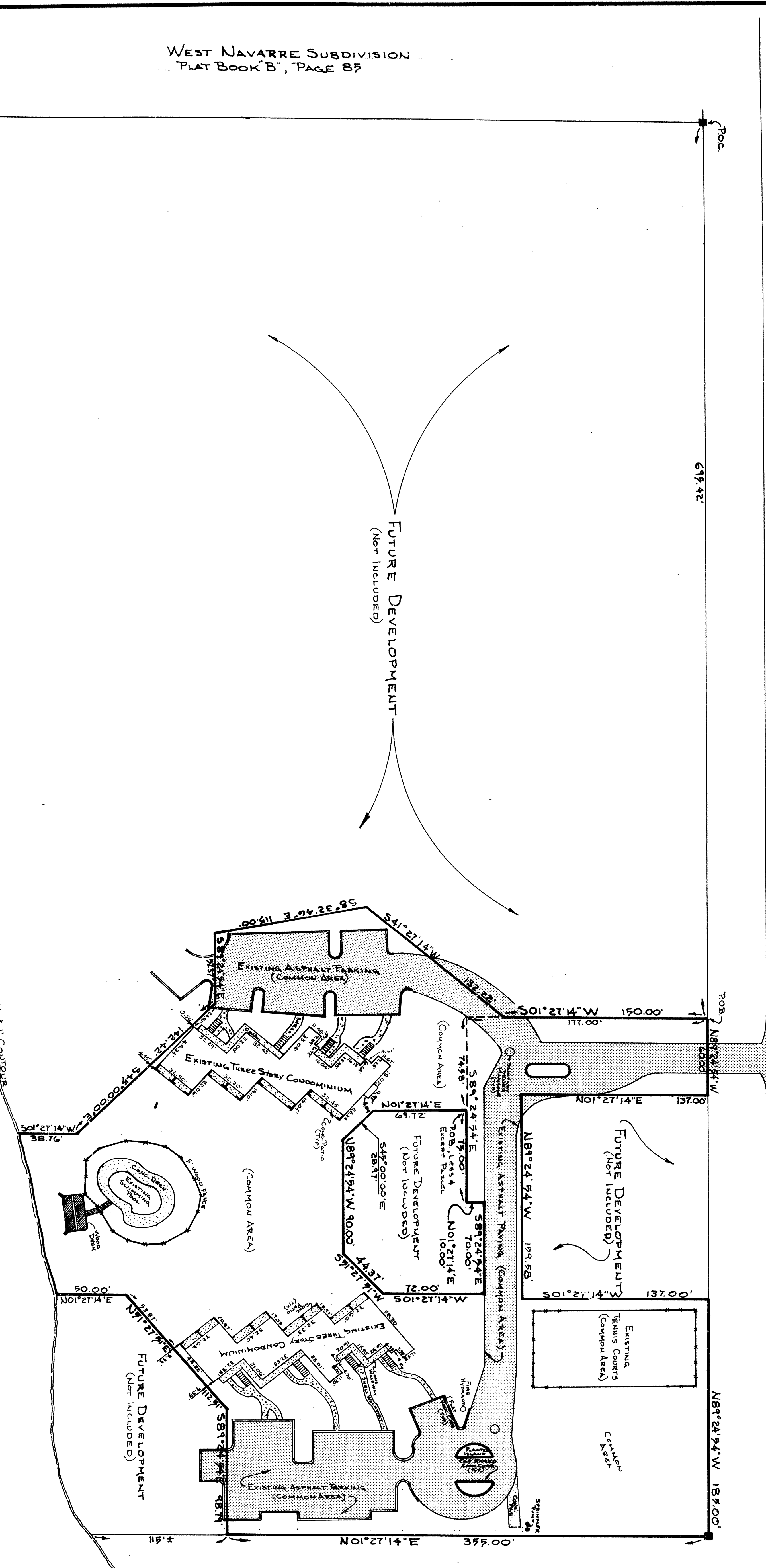
SAFE HARBOUR VILLAGE PHASE - 2

A CONDOMINIUM

IN SECTION 20, TOWNSHIP 2 SOUTH, RANGE 26 WEST, SANTA ROSA COUNTY, FLORIDA

GRAPHIC SCALE 1" = 50'

STATE RD 30, (U.S. 98, 100' R/W)



WEST NAVARRE SUBDIVISION
PLAT BOOK B, PAGE 85

SANTA ROSA SOUND

BUILDINGS	UNIT	FINISHED FLOOR AND CEILING ELEVATIONS	UNDEVELOPED FLOOR ELEV.	CEILING
B	100-104	10.15	18.60	
B	100-206	19.52	27.60	
D	100-106	10.10	18.55	
D	100-206	19.51	27.59	

- GENERAL NOTES:
1. BEARINGS SHOWN HEREON ARE REFERENCED TO THE RIGHT OF WAY OF STATE ROAD NO. 30 AS PER RIGHT OF WAY DRAWING NUMBER 58030-2503.
 2. THIS PROPERTY IS LOCATED IN FLOOD ZONE A-11 (6.00 FT. MINIMUM ELEVATION) AND "C" (NO MINIMUM FLOOR ELEVATION), AND "B" (NO MINIMUM FLOOR ELEVATION), PER H.U.D. MAP FOR SANTA ROSA COUNTY NO. 120274 0020 SHEET 20 OF 65 DATED OCTOBER 14, 1977.

- LEGEND:
- P.O.C. DENOTES POINT OF COMMENCEMENT.
 - P.O.B. DENOTES POINT OF BEGINNING.
 - P.O.S. DENOTES PERMANENT REFERENCE MONUMENT NO. 2535.
 - B-104 DENOTES BUILDING "B", UNIT 104, FIRST FLOOR.
 - B-204 DENOTES BUILDING "B", UNIT 204, SECOND FLOOR.
 - D-104 DENOTES BUILDING "D", UNIT 104, FIRST FLOOR.
 - D-204 DENOTES BUILDING "D", UNIT 204, SECOND FLOOR.
 - (*) DENOTES DEGREES, (') DENOTES MINUTES OR FEET, (") DENOTES SECONDS.

DESCRIPTION:

THAT PORTION OF THE WEST 1100 FEET OF GOVERNMENT LOT 3, SECTION 20, TOWNSHIP 2 SOUTH, RANGE 26 WEST, SANTA ROSA COUNTY, FLORIDA, DESCRIBED AS FOLLOWS: COMMENCE AT THE INTERSECTION OF THE EAST LINE OF WEST NAVARRE SUBDIVISION, PLAT BOOK B, PAGE 85, PUBLIC RECORDS OF SANTA ROSA COUNTY, FLORIDA, AND THE SOUTHERLY RIGHT OF WAY LINE OF STATE ROAD NO. 30 (U.S. 98, 160' R/W); THENCE GO SOUTH 89°24'54" EAST ALONG THE AFORESAID RIGHT OF WAY LINE, A DISTANCE OF 695.42 FEET TO THE POINT OF BEGINNING; THENCE GO SOUTH 1°27'14" WEST, A DISTANCE OF 150.00 FEET; THENCE GO SOUTH 60° SOUTH 1°27'14" WEST, A DISTANCE OF 132.22 FEET; THENCE GO SOUTH 8°32'46" EAST, A DISTANCE OF 115.00 FEET; THENCE GO SOUTH 89°24'54" EAST, A DISTANCE OF 57.37 FEET; THENCE GO SOUTH 45°00'00" EAST, A DISTANCE OF 142.42 FEET; THENCE GO SOUTH 1°27'14" WEST, A DISTANCE OF 38.8 FEET TO A REFERENCE POINT ON THE MEAN HIGH WATER LINE OF THE SANTA ROSA SOUND; THENCE MEANDER EASTERLY, ALONG THE AFORESAID MEAN HIGH WATER LINE TO A REFERENCE POINT WHICH LIES NORTH 78°46'51" EAST, A DISTANCE OF 127.08 FEET FROM THE PRECEDING POINT; THENCE GO NORTH 1°27'14" EAST, A DISTANCE OF 50.0 FEET; THENCE GO NORTH 51°27'51" EAST, A DISTANCE OF 112.51 FEET; THENCE GO SOUTH 89°24'54" EAST, A DISTANCE OF 86.79 FEET; THENCE GO NORTH 1°27'14" EAST, A DISTANCE OF 355.00 FEET TO THE SOUTHERLY RIGHT OF WAY LINE OF STATE ROAD NO. 30 (U.S. 98, 160' R/W); THENCE GO NORTH 83°24'54" WEST, ALONG THE AFORESAID RIGHT OF WAY LINE, A DISTANCE OF 130.00 FEET; THENCE GO SOUTH 1°27'14" WEST, A DISTANCE OF 137.00 FEET; THENCE GO NORTH 89°24'54" WEST, A DISTANCE OF 214.58 FEET; THENCE GO NORTH 1°27'14" EAST, A DISTANCE OF 137.00 FEET TO THE SOUTHERLY RIGHT OF WAY LINE OF STATE ROAD NO. 30 (U.S. 98, 160' R/W); THENCE GO NORTH 83°24'54" WEST, ALONG THE AFORESAID RIGHT OF WAY LINE, A DISTANCE OF 60.00 FEET TO THE POINT OF BEGINNING.

LESS AND EXCEPT THE FOLLOWING DESCRIBED PARCEL:

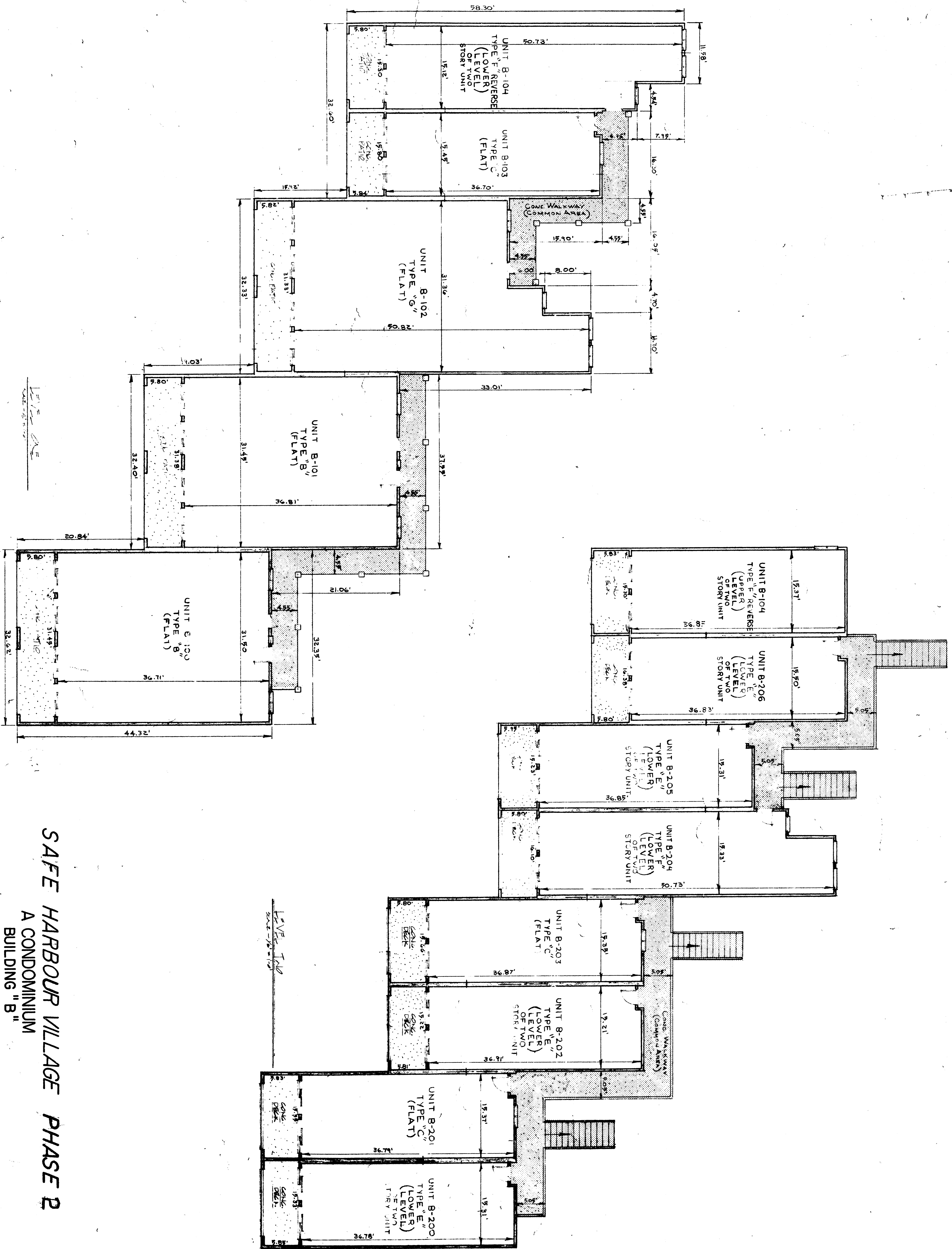
COMMENCE AT THE INTERSECTION OF THE EAST LINE OF WEST NAVARRE SUBDIVISION, PLAT BOOK B, PAGE 85, PUBLIC RECORDS OF SANTA ROSA COUNTY, FLORIDA AND THE SOUTHERLY RIGHT OF WAY LINE OF STATE ROAD NO. 30 (U.S. 98, 100' R/W); THENCE GO SOUTH 89°24'54" EAST ALONG THE AFORESAID RIGHT OF WAY LINE A DISTANCE OF 695.42 FEET; THENCE GO SOUTH 1°27'14" WEST A DISTANCE OF 177.00 FEET; THENCE GO SOUTH 89°24'54" EAST A DISTANCE OF 74.89 FEET TO THE POINT OF BEGINNING; THENCE CONTINUE SOUTH 89°24'54" EAST A DISTANCE OF 75.00 FEET; THENCE GO NORTH 1°27'14" EAST A DISTANCE OF 10.00 FEET; THENCE GO SOUTH 89°24'54" EAST A DISTANCE OF 70.69 FEET; THENCE GO SOUTH 1°27'14" WEST A DISTANCE OF 72.00 FEET; THENCE GO SOUTH 51°27'51" WEST A DISTANCE OF 44.37 FEET; THENCE GO NORTH 89°24'54" WEST A DISTANCE OF 90.00 FEET; THENCE GO NORTH 45°00'00" WEST A DISTANCE OF 28.97 FEET; THENCE GO NORTH 1°27'14" EAST A DISTANCE OF 69.72 FEET TO THE POINT OF BEGINNING.

SURVEYOR'S CERTIFICATE:

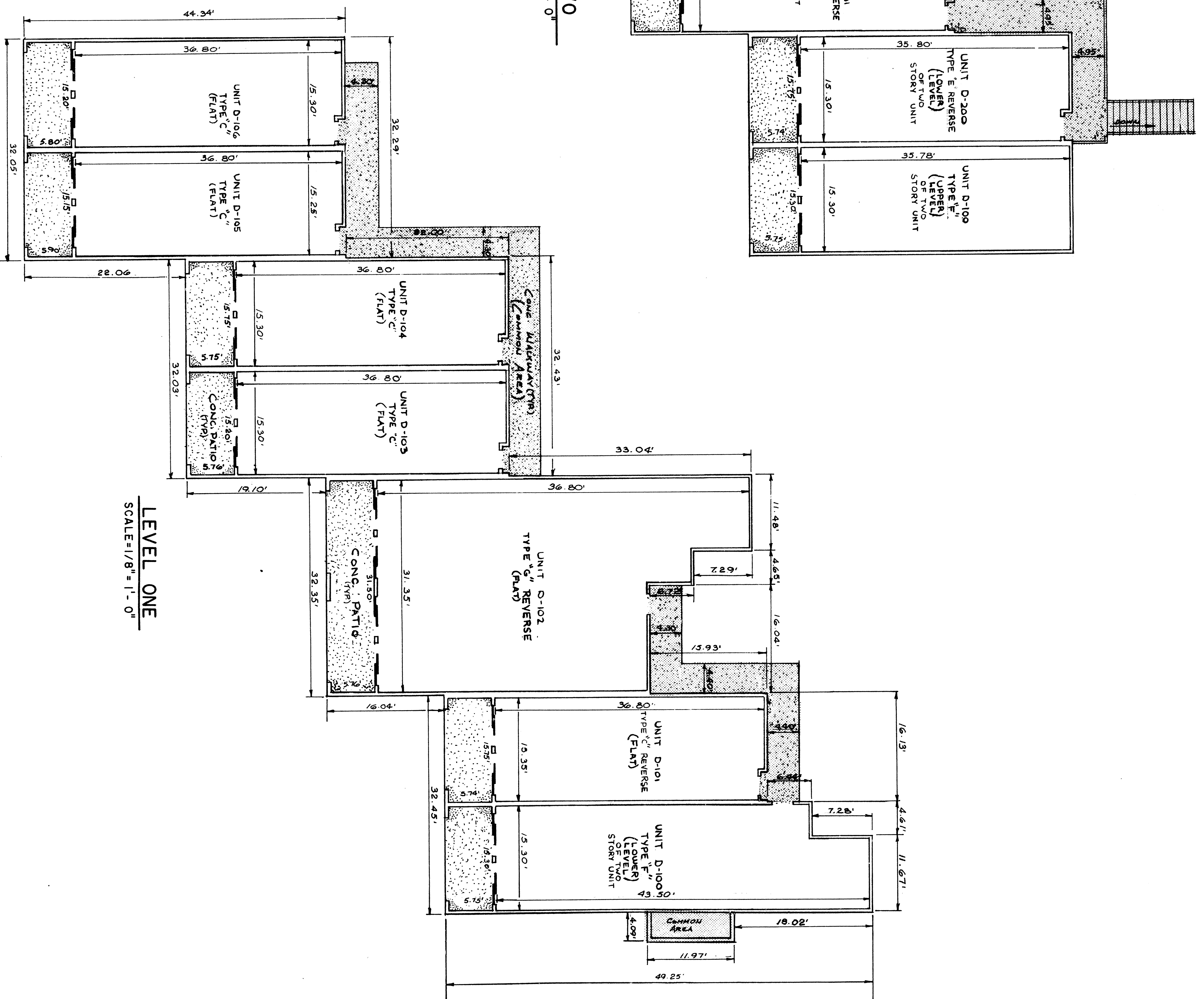
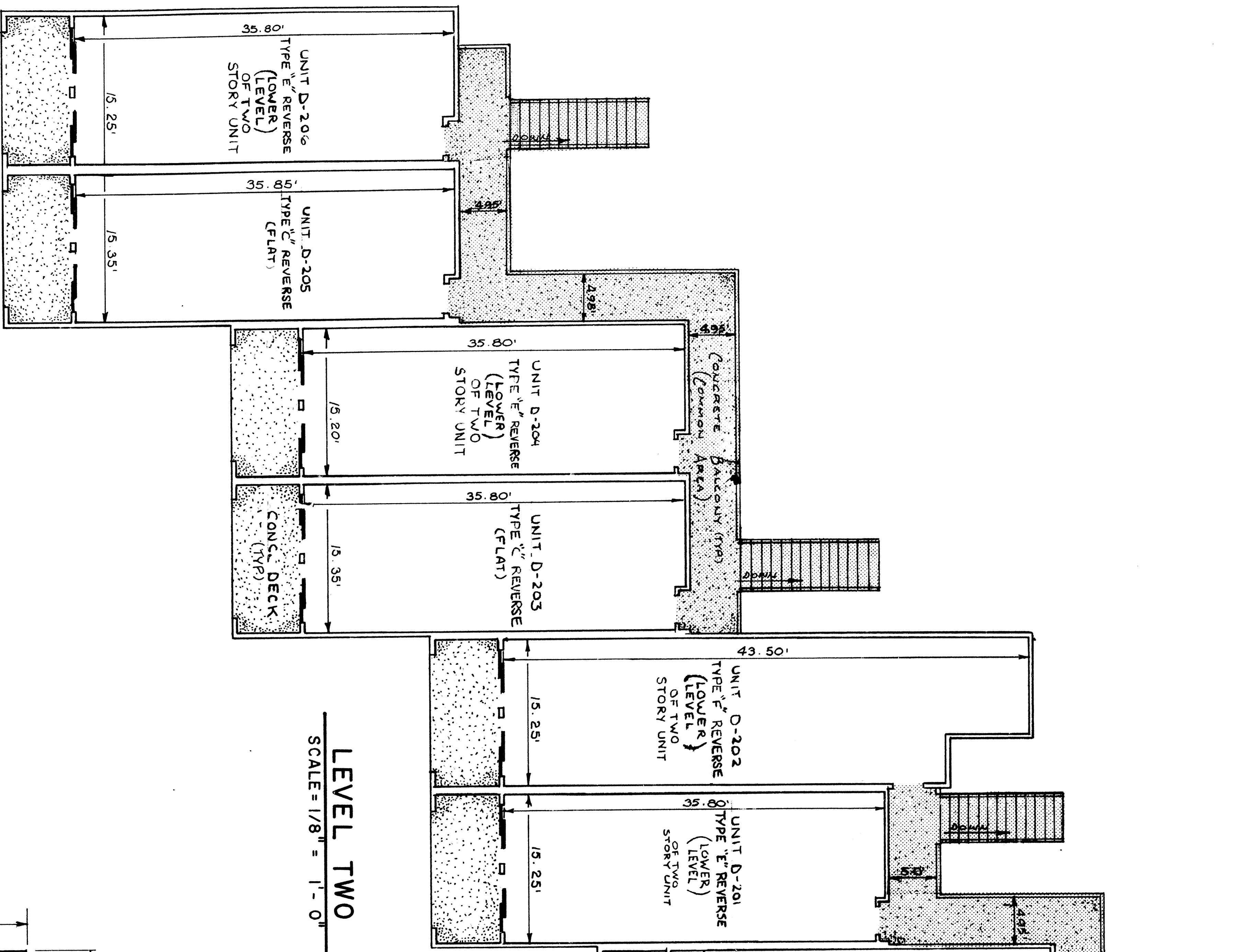
I HEREBY CERTIFY THAT THIS IS A TRUE AND CORRECT SURVEY OF THE PROPERTY DESCRIBED HEREON AND THAT THE CONSTRUCTION OF IMPROVEMENTS DEPICTED AND DESCRIBED IN THIS EXHIBIT IS SUBSTANTIALLY COMPLETE SO THE MATERIALS WHICH COMPRISE THIS EXHIBIT TOGETHER WITH THE PROVISIONS OF THE DECLARATION OF CONDOMINIUM DESCRIBING THE CONDOMINIUM PROPERTY, IS AN ACCURATE REPRESENTATION OF THE LOCATION AND DIMENSION OF THE IMPROVEMENTS AND THAT THE IDENTIFICATION, LOCATION, AND DIMENSIONS OF THE COMMON ELEMENTS AND OF EACH UNIT CAN BE DETERMINED FROM SAID MATERIALS.

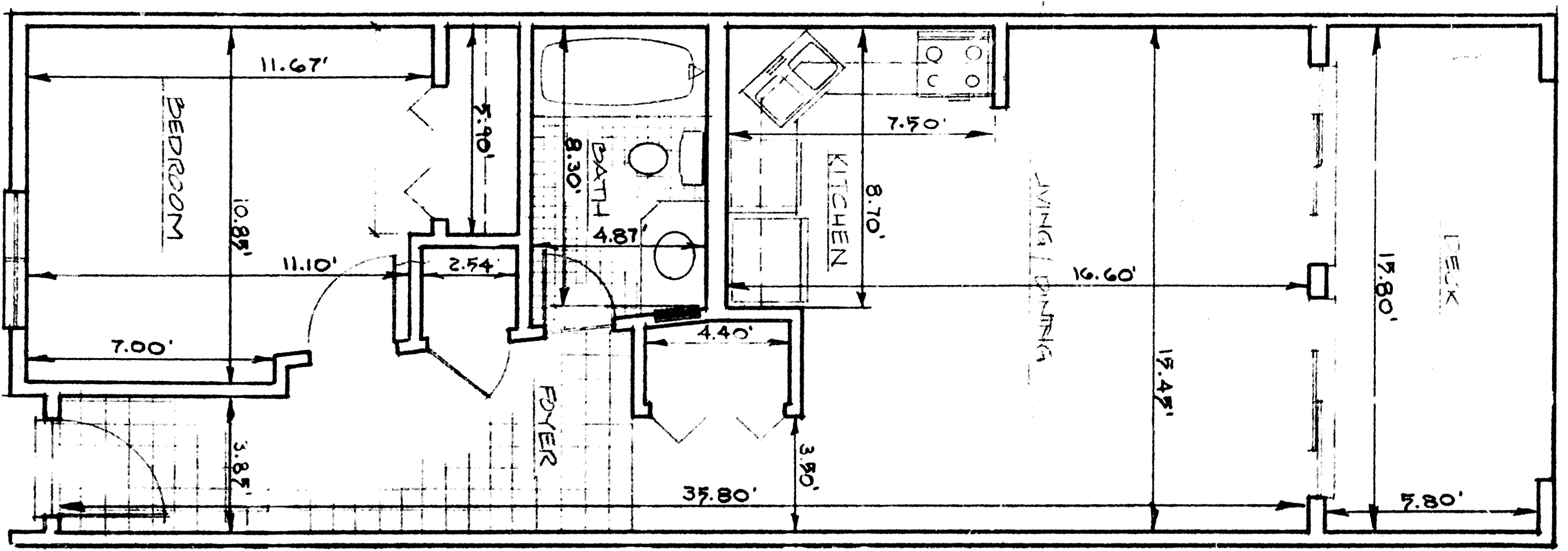
Raymond E. Richardson 16 Dec 1983
RAYMOND E. RICHARDSON, FLORIDA REGISTRATION NO. 2535
P. O. BOX 812
DESLIN, FLORIDA 32541

SAFE HARBOUR VILLAGE PHASE 2
A CONDOMINIUM
BUILDING "B"

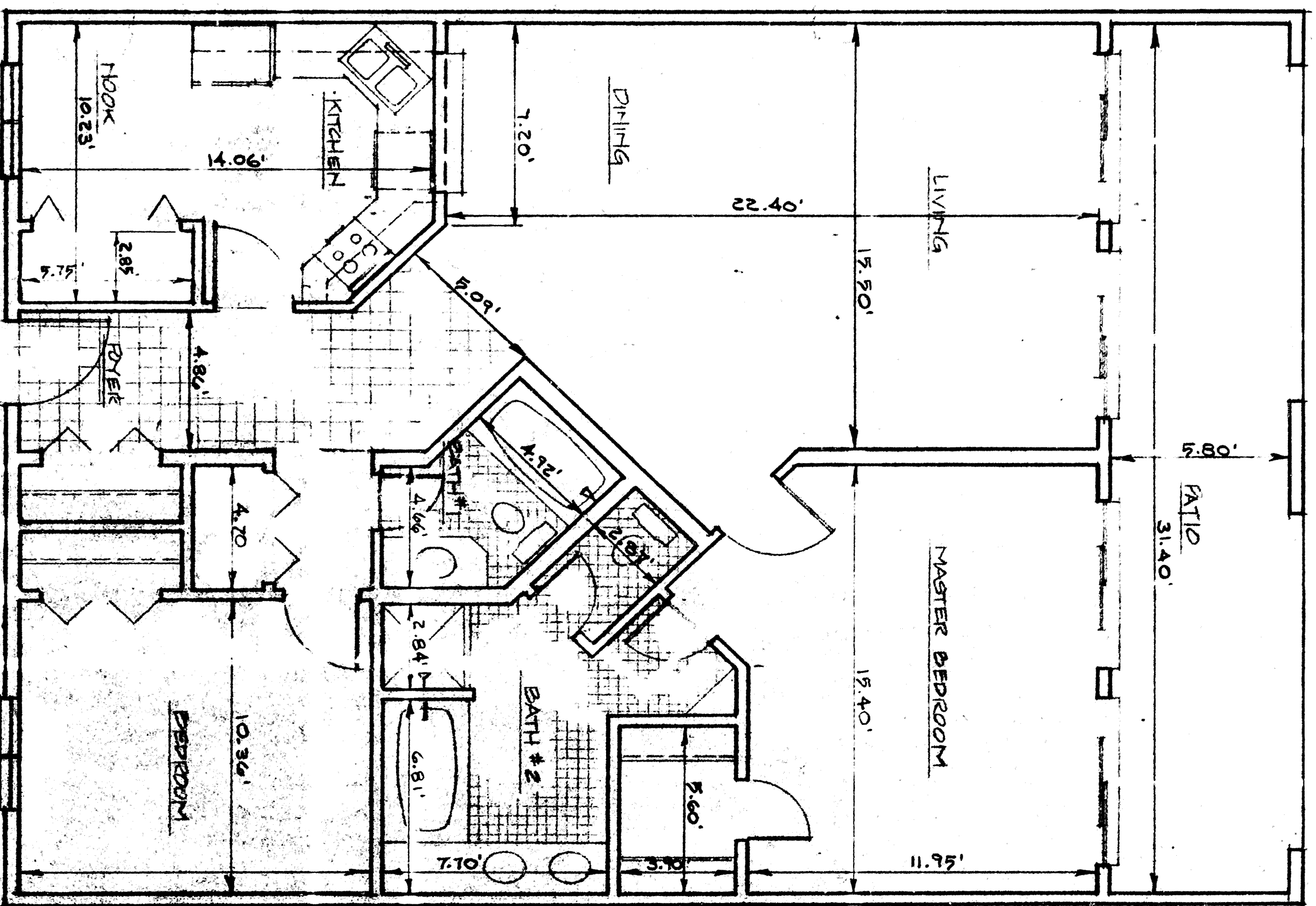


SAFE HARBOUR VILLAGE PHASE 2
 A CONDOMINIUM
 BUILDING "D"

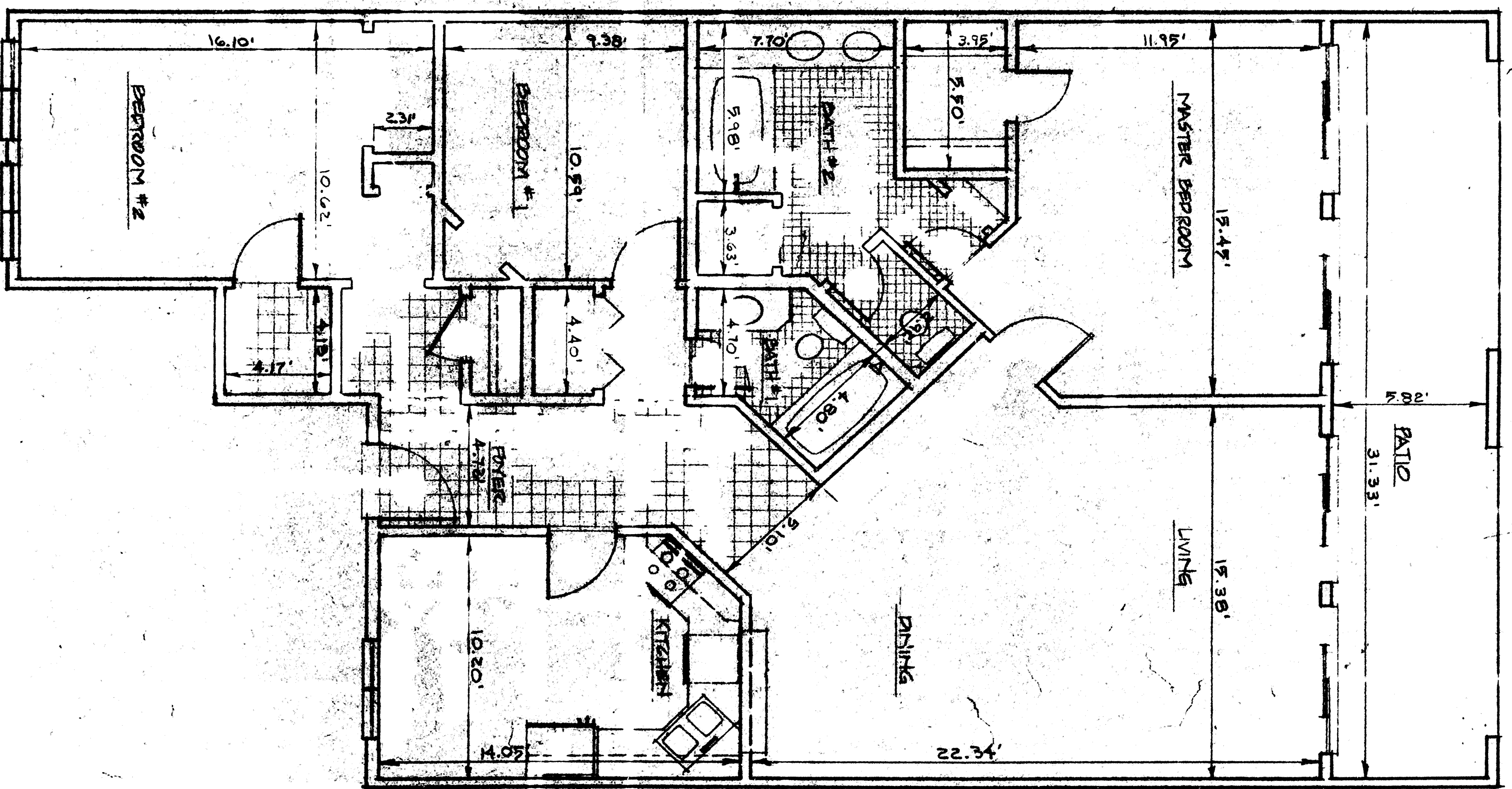




UNIT 1 - 1 BEDROOM FLAT
SCALE: 1/4" = 1'-0"

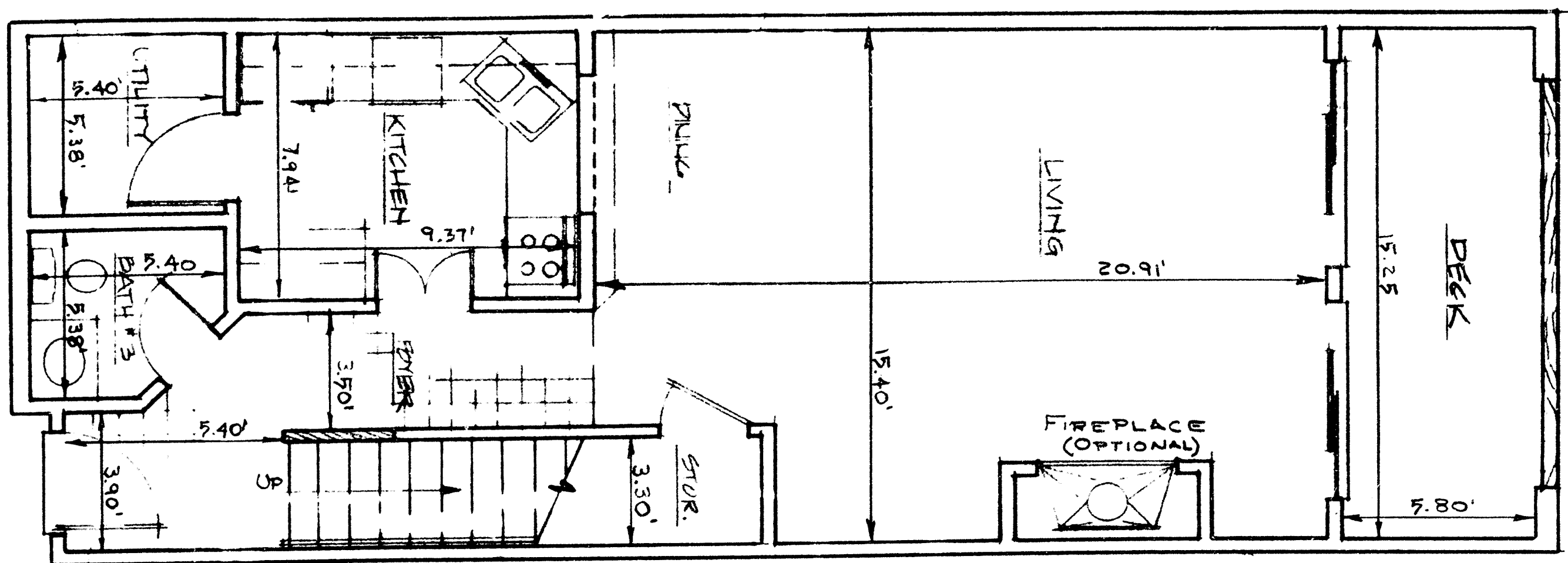


UNIT 2 - 2 BEDROOM FLAT
SCALE: 1/4" = 1'-0"

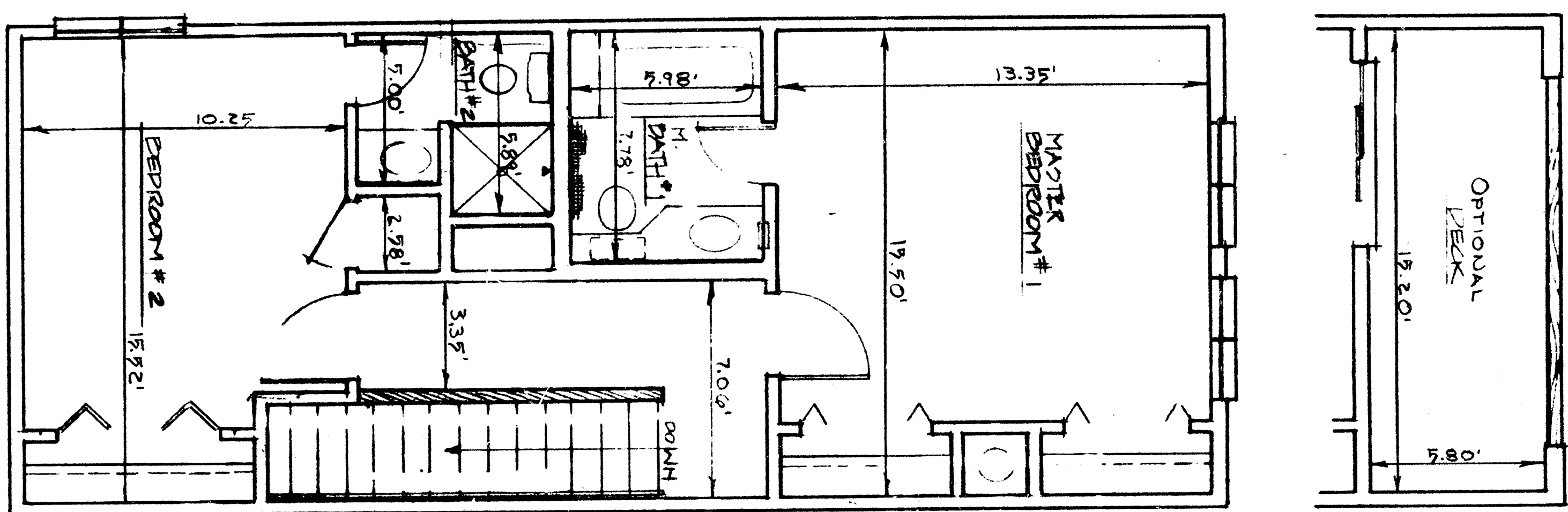


UNIT 3 - 3 BEDROOM FLAT
SCALE: 1/4" = 1'-0"

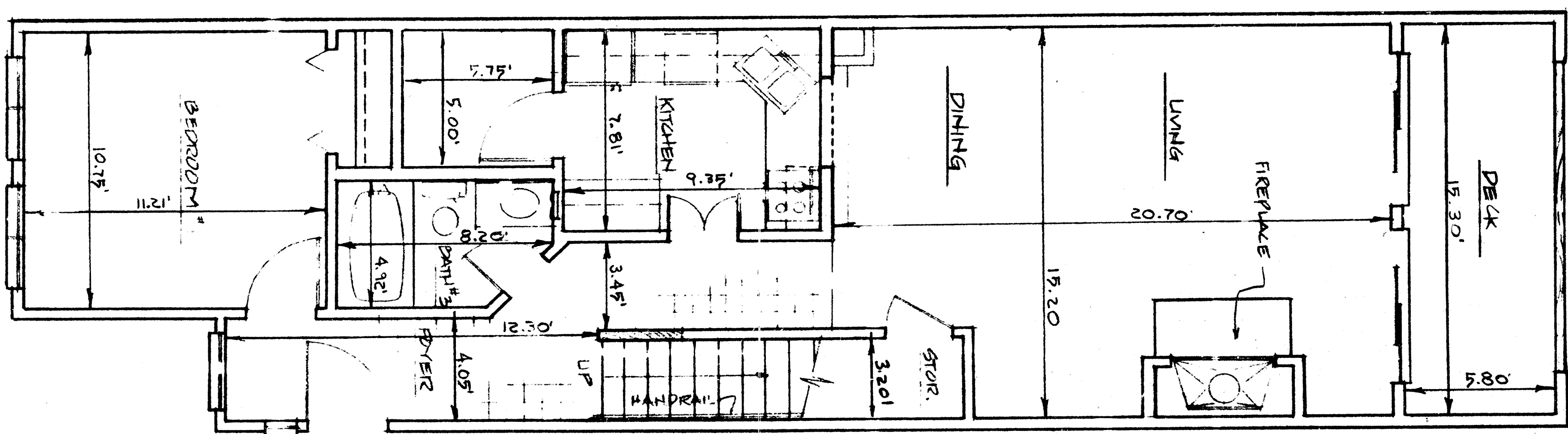
SAGE HARBOUR VILLAGE
A CONDOMINIUM
TYPICAL UNIT PLANS



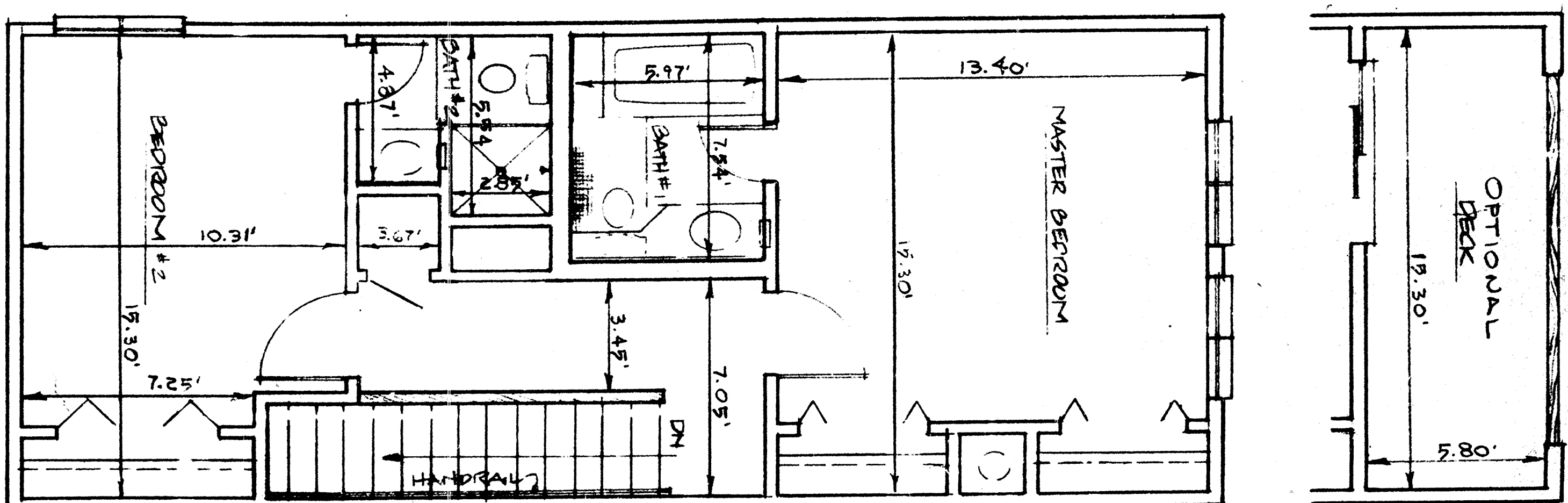
UNIT E - 2 BEDROOM TOWNHOME
LOWER LEVEL
SCALE 1/4" = 1'-0"



UNIT E - 2 BEDROOM TOWNHOME
UPPER LEVEL
SCALE 1/4" = 1'-0"



UNIT F - 3 BEDROOM TOWNHOME
LOWER LEVEL
SCALE 1/4" = 1'-0"



UNIT F - 3 BEDROOM TOWNHOME
UPPER LEVEL
SCALE 1/4" = 1'-0"

SAFE HARBOUR VILLAGE
A CONDOMINIUM
TYPICAL UNIT PLANS