

EXHIBIT "D"

TO

DECLARATION OF CONDOMINIUM

SABINE YACHT AND RACQUET CLUB

A CONDOMINIUM

PERCENTAGE SHARE OF COMMON ELEMENTS,  
COMMON SURPLUS, AND COMMON EXPENSES

<u>Floor No.</u>	<u>Unit No.</u>	<u>Percentage Share</u>
First Floor	1A	1.3484
	1B	.7920
	1C	.7920
	1D	1.3484
	1E	.8971
	1F	.8971
	1G	.8971
	1H	.8971
Second Floor	2A	1.3484
	2B	.7920
	2C	.7920
	2D	1.3484
	2E	1.3484
	2F	1.3484
	2G	1.3484
Third Floor	3A	1.3484
	3B	.7920
	3C	.7920
	3D	1.3484
	3E	1.3484
	3F	1.3484
	3G	1.3484
Fourth Floor	4A	1.3484
	4B	.7920
	4C	.7920
	4D	1.3484
	4E	1.3484
	4F	1.3484
	4G	1.3484
Fifth Floor	5A	1.3484
	5B	.7920
	5C	.7920
	5D	1.3484
	5E	1.3484
	5F	1.3484
	5G	1.3484
Sixth Floor	6A	1.3484
	6B	.7920
	6C	.7920
	6D	1.3484
	6E	1.3484
	6F	1.3484
	6G	1.3484

<u>Floor No.</u>	<u>Unit No.</u>	<u>Percentage Share</u>
Seventh Floor	7A	1.3484
	7B	.7920
	7C	.7920
	7D	1.3484
	7E	1.3484
	7F	1.3484
	7G	1.3484
Eighth Floor	8A	1.3484
	8B	.7920
	8C	.7920
	8D	1.3484
	8E	1.3484
	8F	1.3484
	8G	1.3484
Ninth Floor	9A	1.7315
	9B	.9540
	9C	1.7315
	9D	1.3484
	9E	1.3484
	9F	1.3484
Tenth Floor	10A	1.7315
	10B	.9540
	10C	1.7315
	10D	1.3484
	10E	1.3484
	10F	1.3484
Eleventh Floor	11A	1.7315
	11B	.9540
	11C	1.7315
	11D	1.3484
	11E	1.3484
	11F	1.3484
Twelfth Floor	12A	1.7315
	12B	.9540
	12C	1.7315
	12D	1.3484
	12E	1.3484
	12F	1.3484
		<u>100%</u>

EXHIBIT "C"  
SHEET 16 OF 16

LEGAL DESCRIPTION

Commence at the Southeast corner of Block "C", 1st Addition to Villa Sabine Subdivision as recorded in Plat Book 5 at Page 75 of the Public Records of Escambia County, Florida; thence go South 89 degrees 50 minutes 20 seconds West along the Northerly Right-of-Way line of Ft. Pickens Road (State Road #399, 120 feet Right-of-Way) a distance of 324.00 feet to the Southwest corner of Lot 15, Block "A", Spanish Landing Subdivision as recorded in Plat Book 8 at Page 24 of the Public Records of Escambia County, Florida, and the Point of Beginning; thence continue South 89 degrees 50 minutes 20 seconds West along said Northerly Right-of-Way a distance of 376.00 feet; thence go North 00 degrees 00 minutes 00 seconds East parallel to the Easterly line of Block "C" a distance of 269 feet more or less to the Mean-High-Water Line of Little Sabine Bay; thence meander Northeasterly along the aforesaid Mean-High-Water line to a point where it intersects a line passed through the Point of Beginning having a bearing of North 00 degrees 09 minutes 40 seconds West; said line being the Westerly line of aforesaid Lot 15, Block "A", Spanish Landing Subdivision; thence go South 00 degrees 09 minutes 40 seconds East a distance of 290 feet more-or-less to the Point of Beginning.

Gulf Power has a general or blanket Power Easement over complete property.

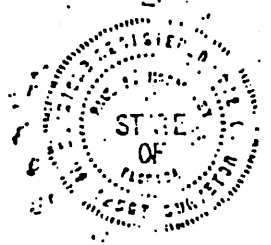
Santa Rosa Island Authority has a general or blanket Sanitary Sever & Storm water maintenance easement over complete property.

SURVEYOR'S CERTIFICATION

The undersigned, a Surveyor, duly authorized to practice under the laws of the State of Florida, hereby certifies that: The construction of the improvements described is sufficiently complete so that this Exhibit "C", together with the wording of the Declaration relating to matters of survey, is a correct representation of the improvements described, and further, that with such material there can be determined therefrom the identification, location and dimensions of the common elements, limited common elements and of each unit.

*Paul J. McCarty*

Registered Florida Land Surveyor #1140

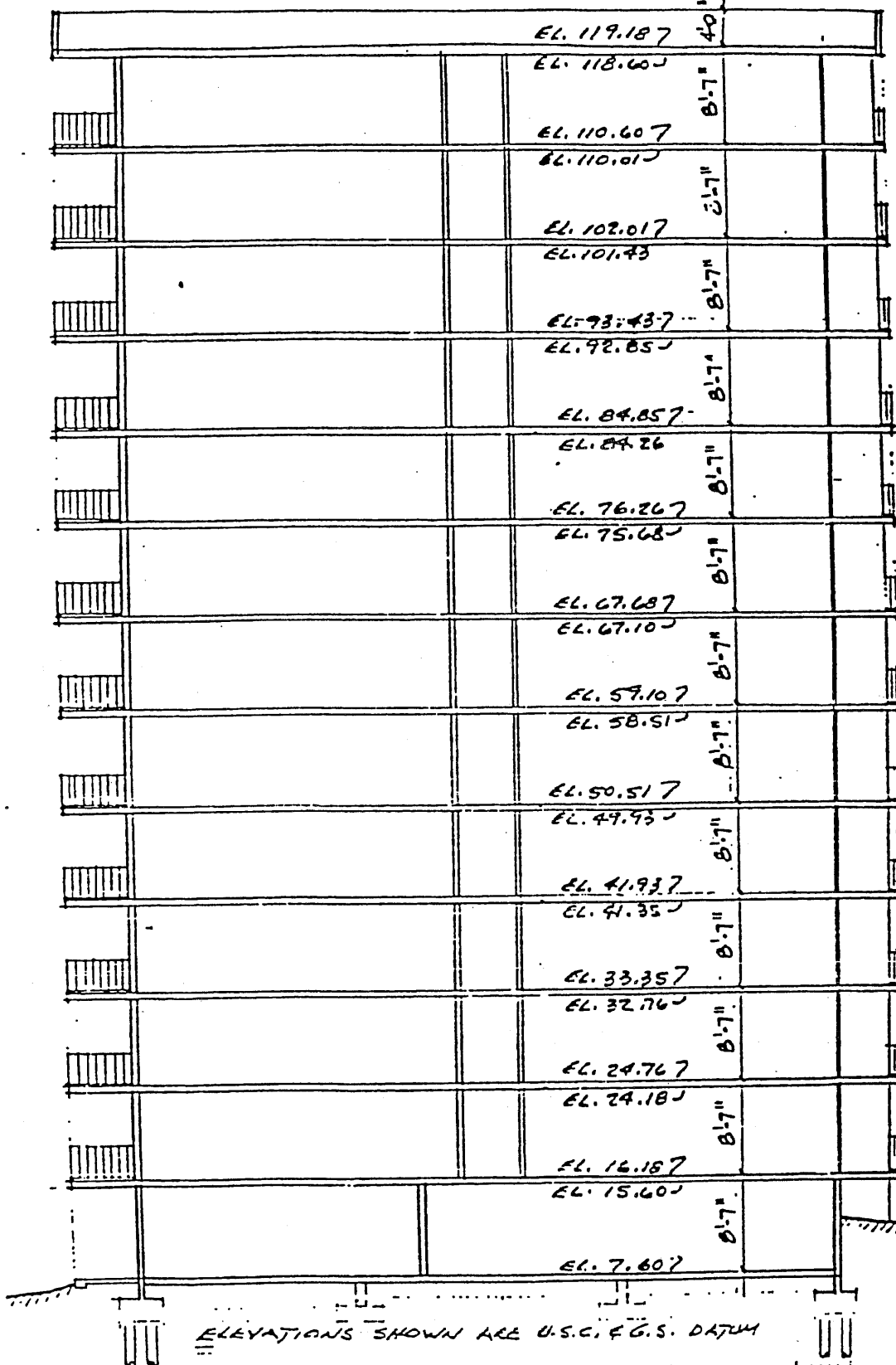


4770-4



EXHIBIT "C"  
SHEET 15 OF 16

1063 PAGE 664



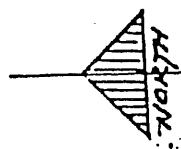
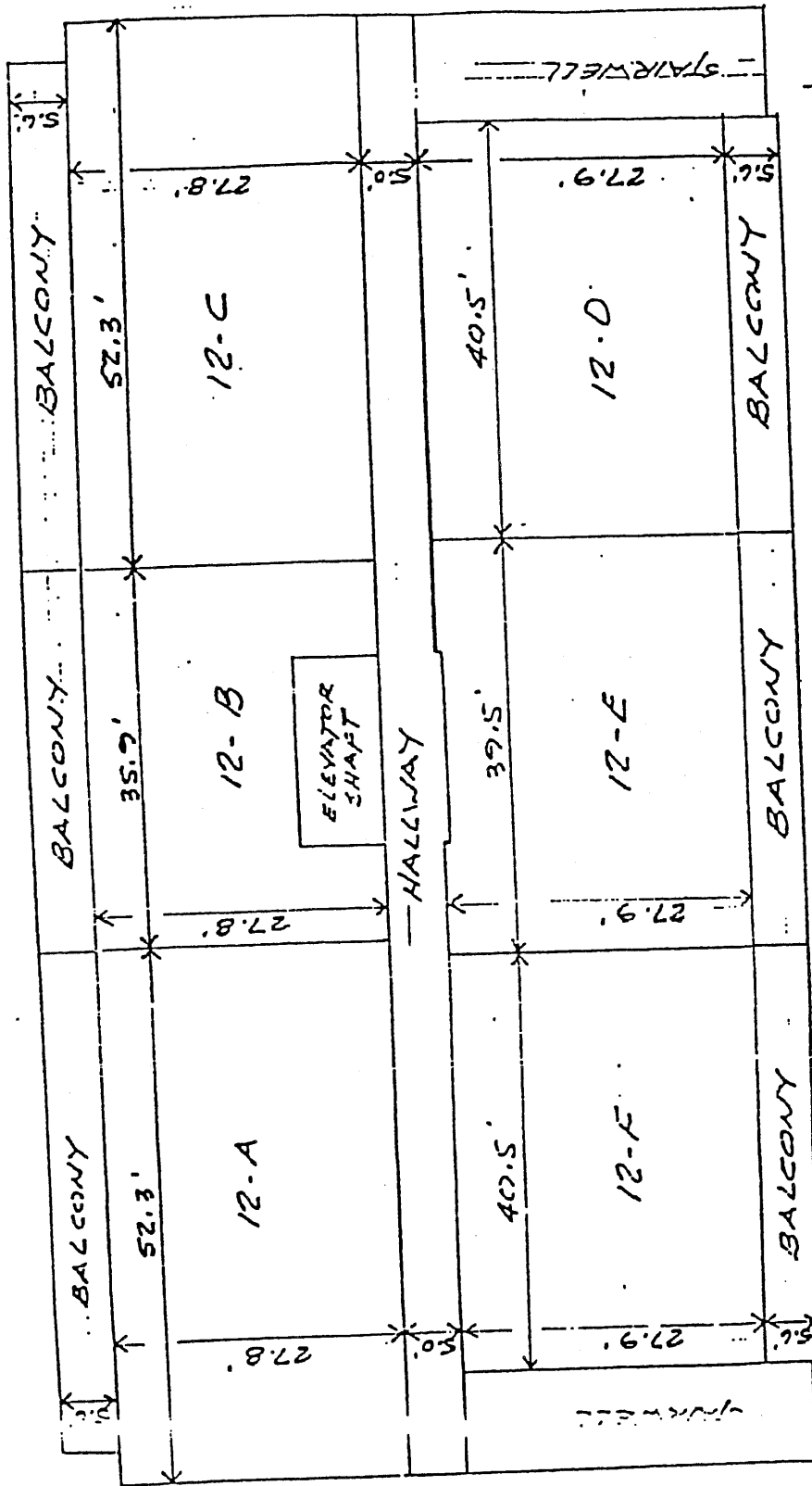
ELEVATIONS SHOWN ARE U.S.C. & G.S. DATUM

BUILDING CROSS SECTION

EXHIBIT "C"  
SHEET 14 OF 16

REF 1063 PAGE 065

SEE "TYPICAL" NOTE - FIRST FLOOR

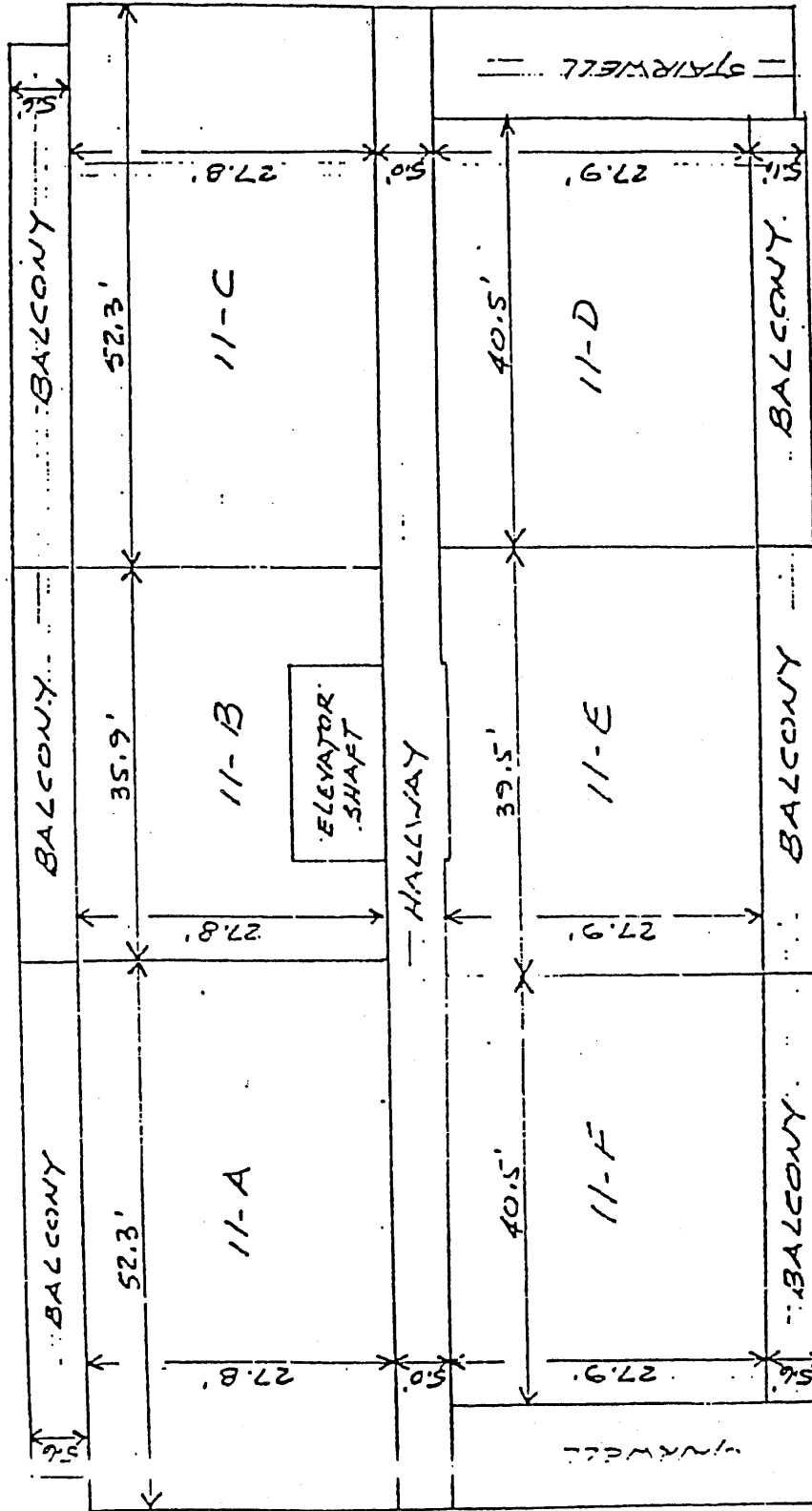


TWELFTH FLOOR  
EACH UNIT HAS A BALCONY ACCESSIBLE  
ONLY FROM THAT UNIT (LIMITED COMMON  
ELEMENTS)

4770-4

EXHIBIT "C"  
SHEET 13 OF 16

SEE "TYPICAL" NOTES - FIRST FLOOR



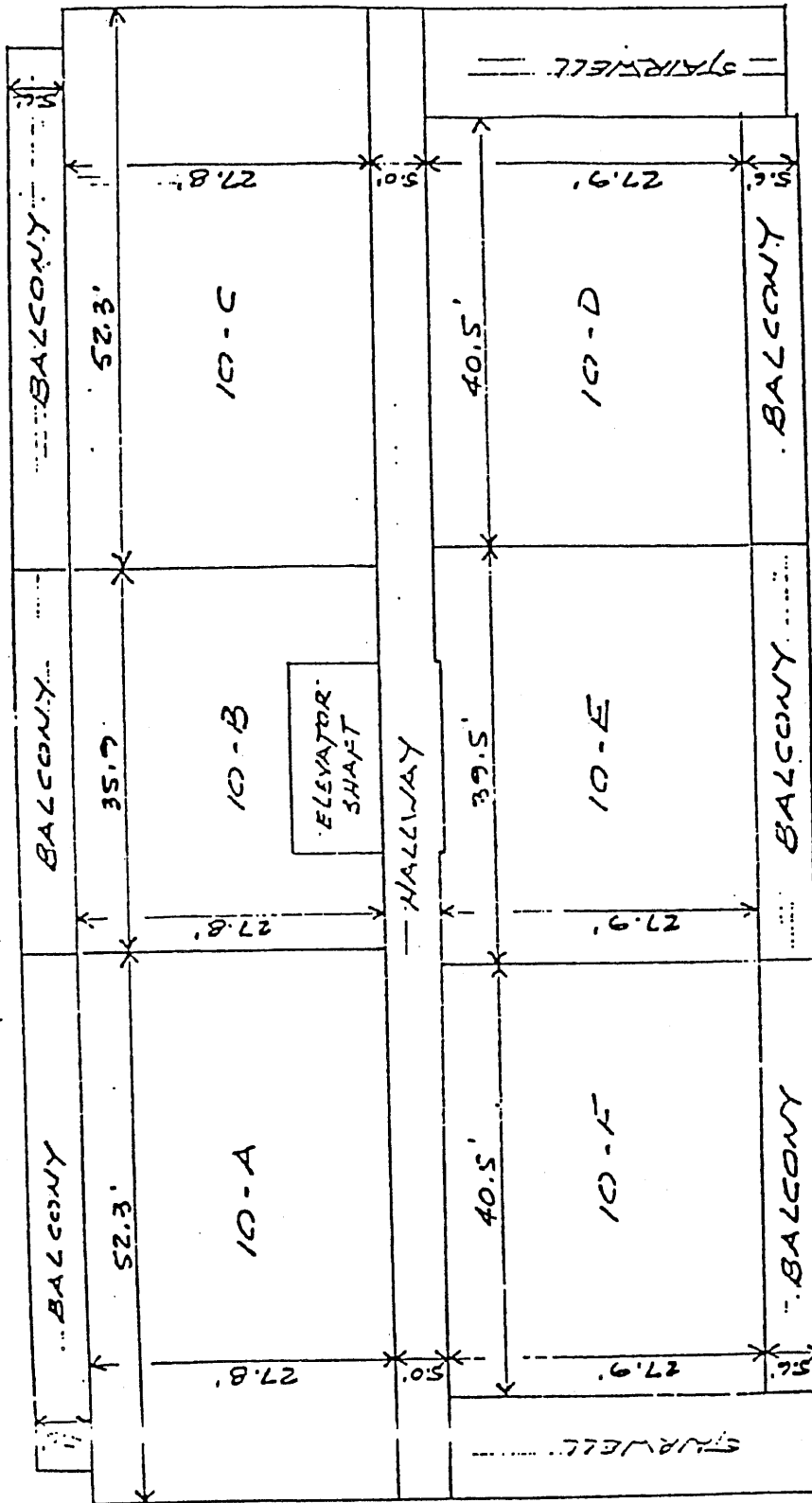
ELEVENTH FLOOR  
EACH UNIT HAS A BALCONY ACCESSIBLE  
ONLY FROM THAT UNIT ("LIMITED COMMON  
ELEMENT")

7-0267

EXHIBIT "C"  
SHEET 12 OF 16

1063 PAGE 667

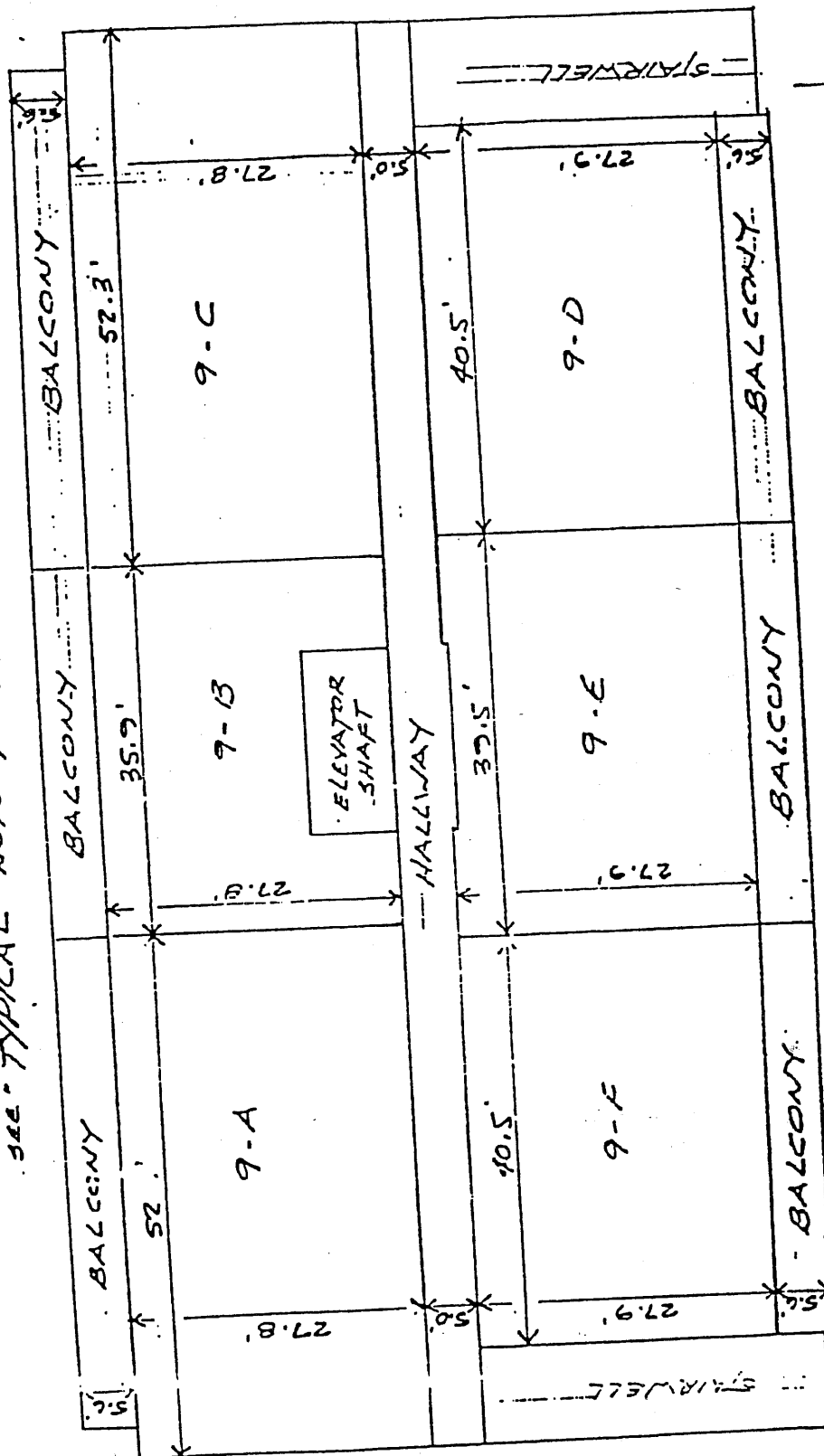
SEE "TYPICAL" NOTE - FIRST FLOOR



TENTH FLOOR  
EACH UNIT HAS A BALCONY ACCESSIBLE ONLY FROM THAT UNIT (LIMITED COMMON ELEMENT)

EXHIBIT "C"  
SHEET 11 OF 16

SEE TYPICAL NOTE - FIRST FLOOR



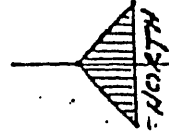
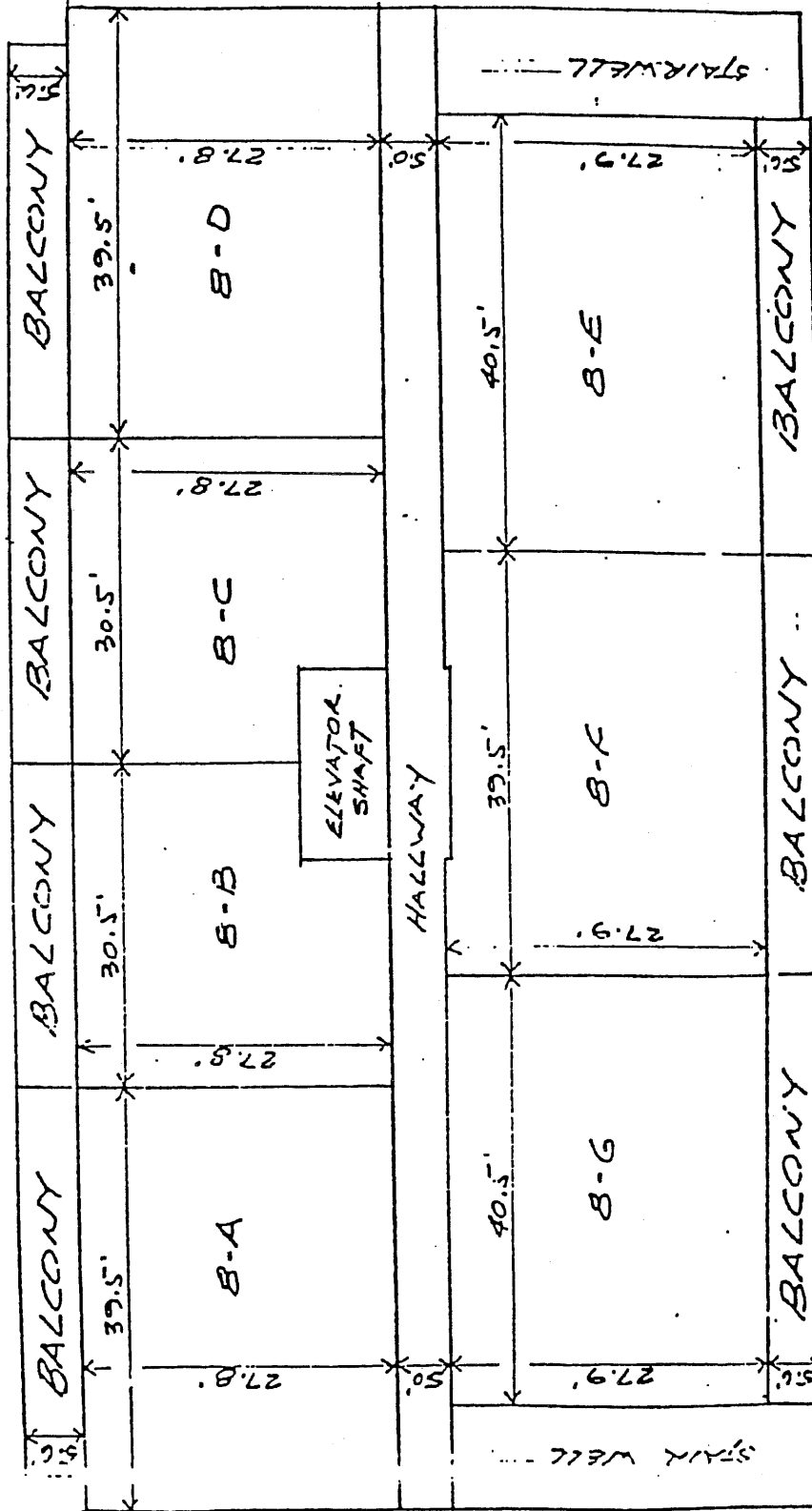
NINTH FLOOR  
EACH UNIT HAS A BALCONY ACCESSIBLE ONLY FROM THAT UNIT ("LIMITED COMMON ELEMENT")



EXHIBIT "C"  
SHEET 10 OF 16

1063 PAGE 669

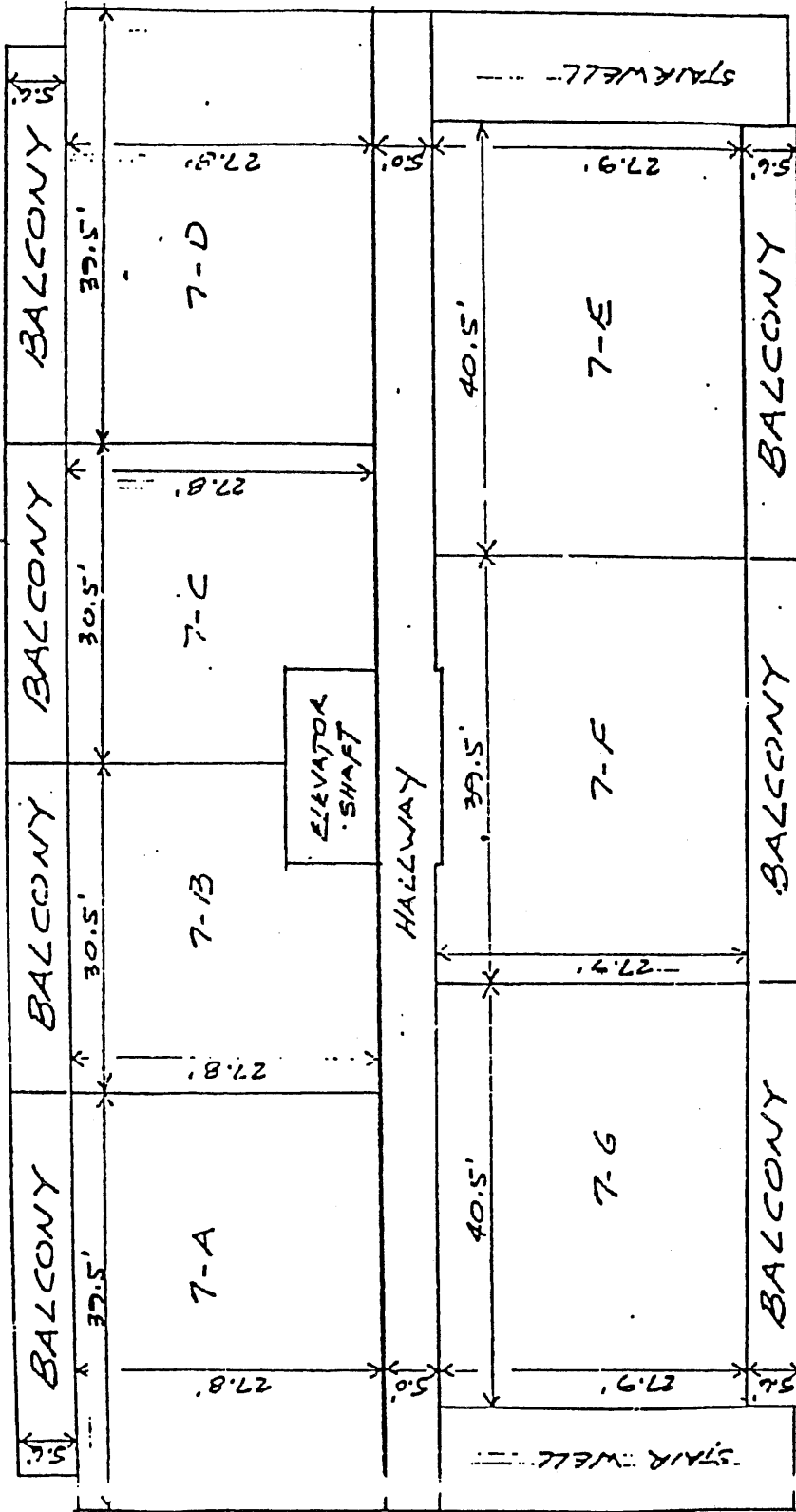
SEE TYPICAL NOTE - FIRST FLOOR



EIGHTH FLOOR  
EACH UNIT HAS A BALCONY ACCESSIBLE ONLY FROM THAT UNIT (UNITED COMMON ELEMENTS)

477C-4

SEE "TYPICAL" NOTE - FIRST FLOOR



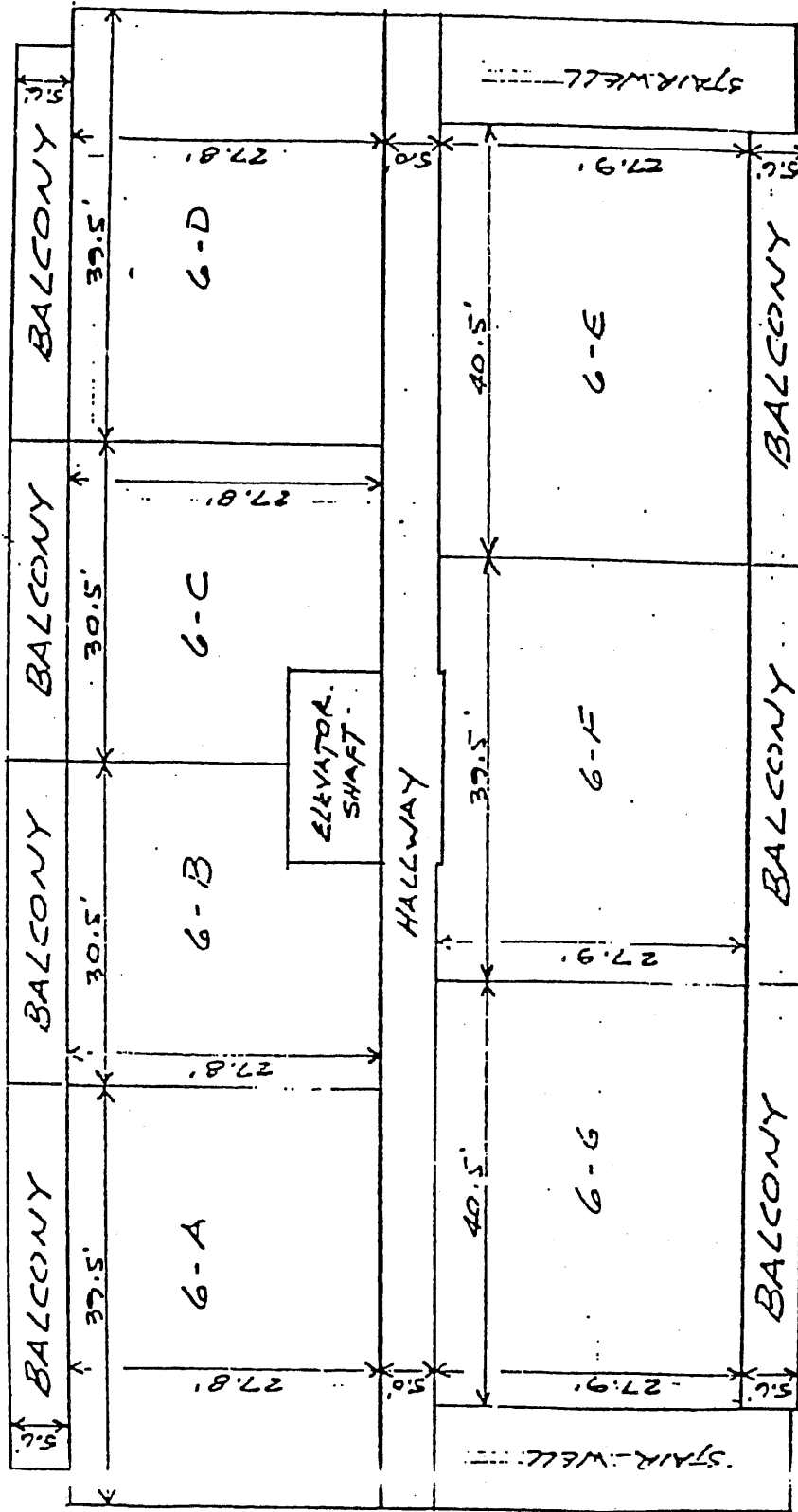
SEVENTH FLOOR  
EACH UNIT HAS A BALCONY ACCESSIBLE ONLY FROM THAT UNIT (LIMITED COMMON ELEMENTS)

4770-1

EXHIBIT "C"  
SHEET 8 OF 16

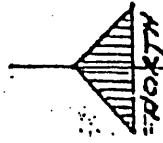
PER REC  
NO. 1063 PAGE 671

SEE "TYPICAL" NOTE - FIRST FLOOR



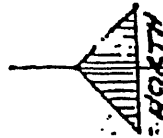
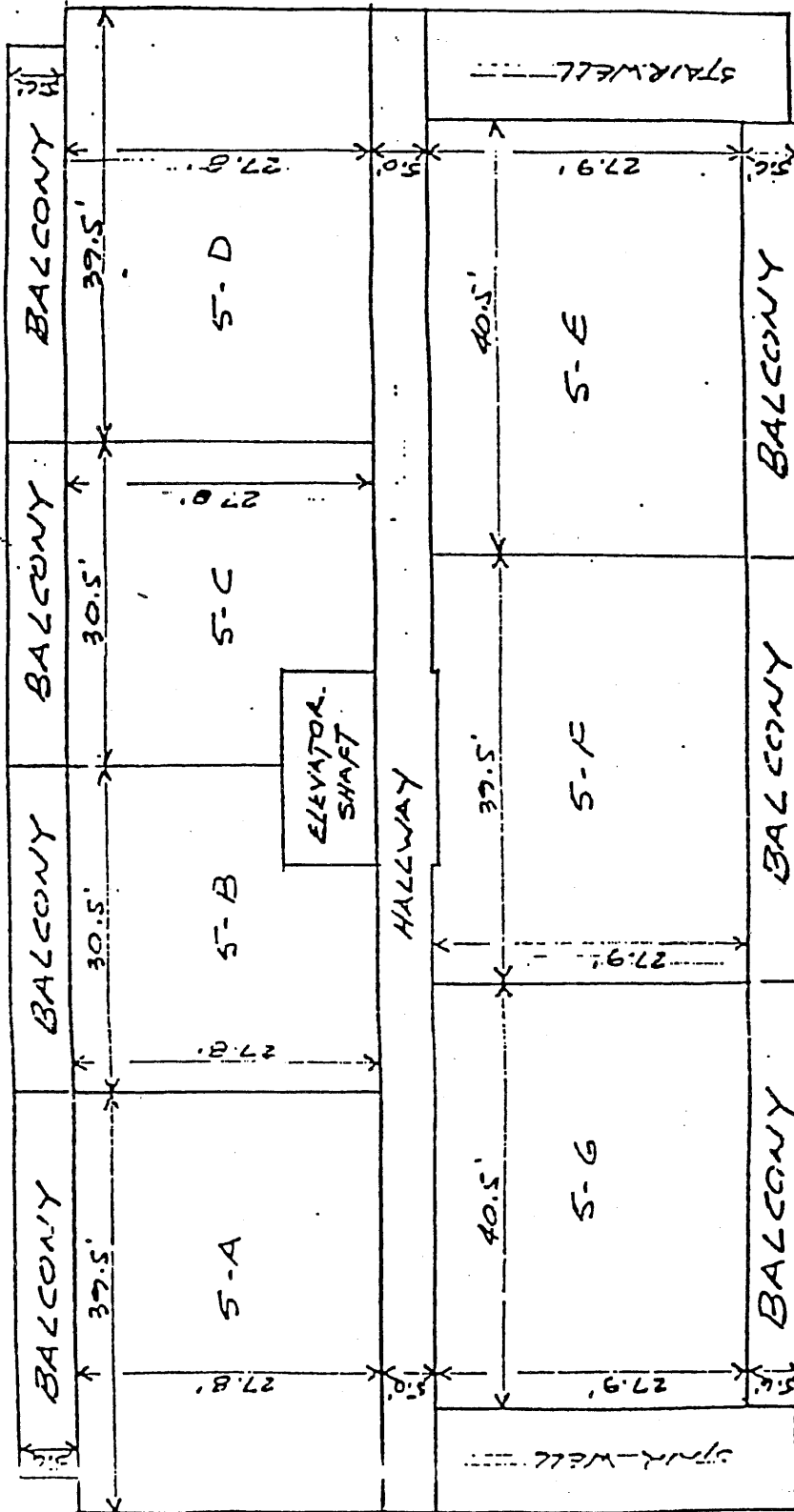
SIXTH FLOOR

EACH UNIT HAS A BALCONY ACCESSIBLE ONLY FROM THAT UNIT LIMITED COMMON ELEMENTS



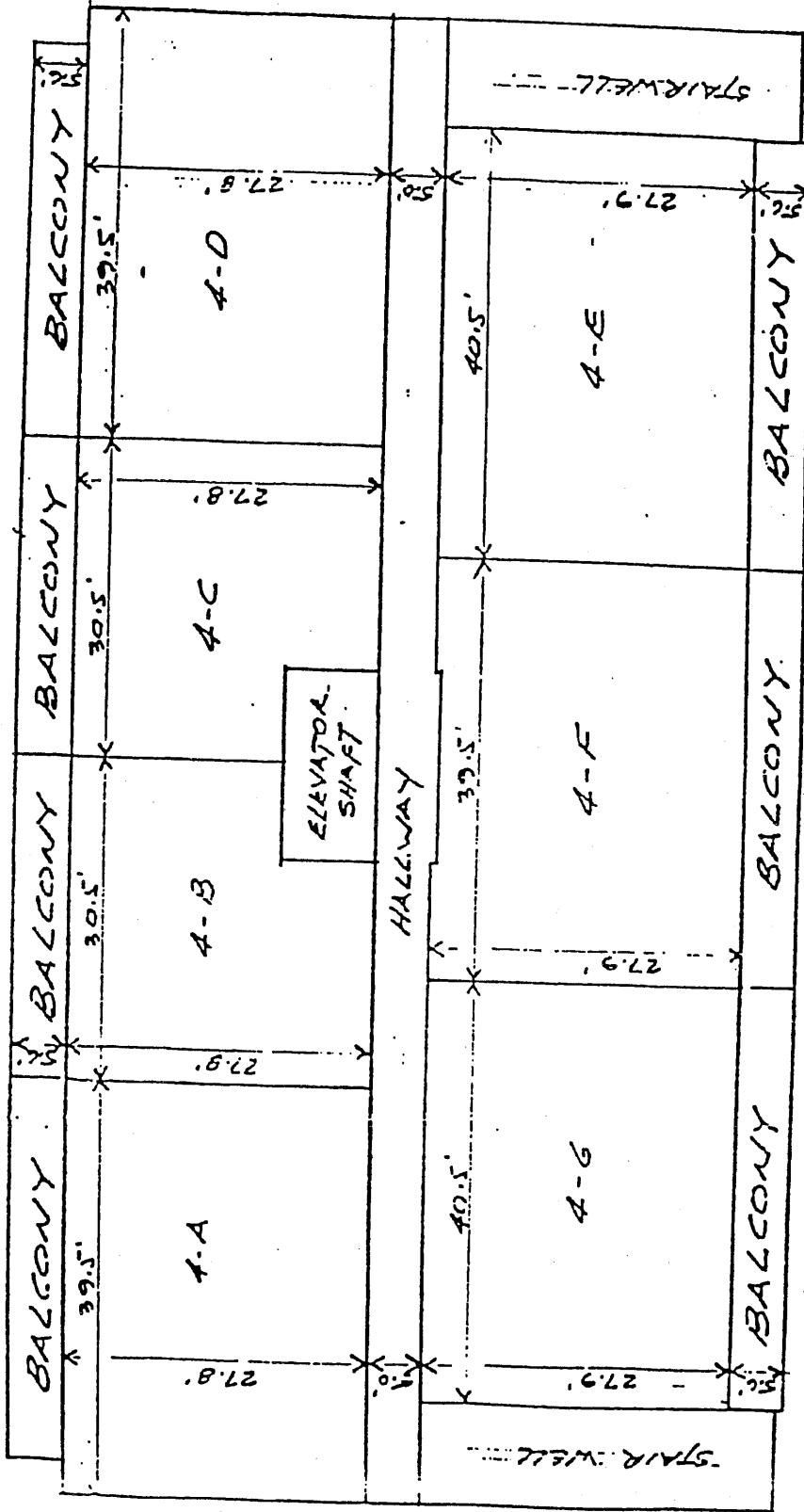
4770-4

SEE "TYPICAL" NOTE - FIRST FLOOR



FIFTH FLOOR  
EACH UNIT HAS A BALCONY ACCESSIBLE  
ONLY FROM THAT UNIT (LIMITED COMMON  
ELEMENTS)

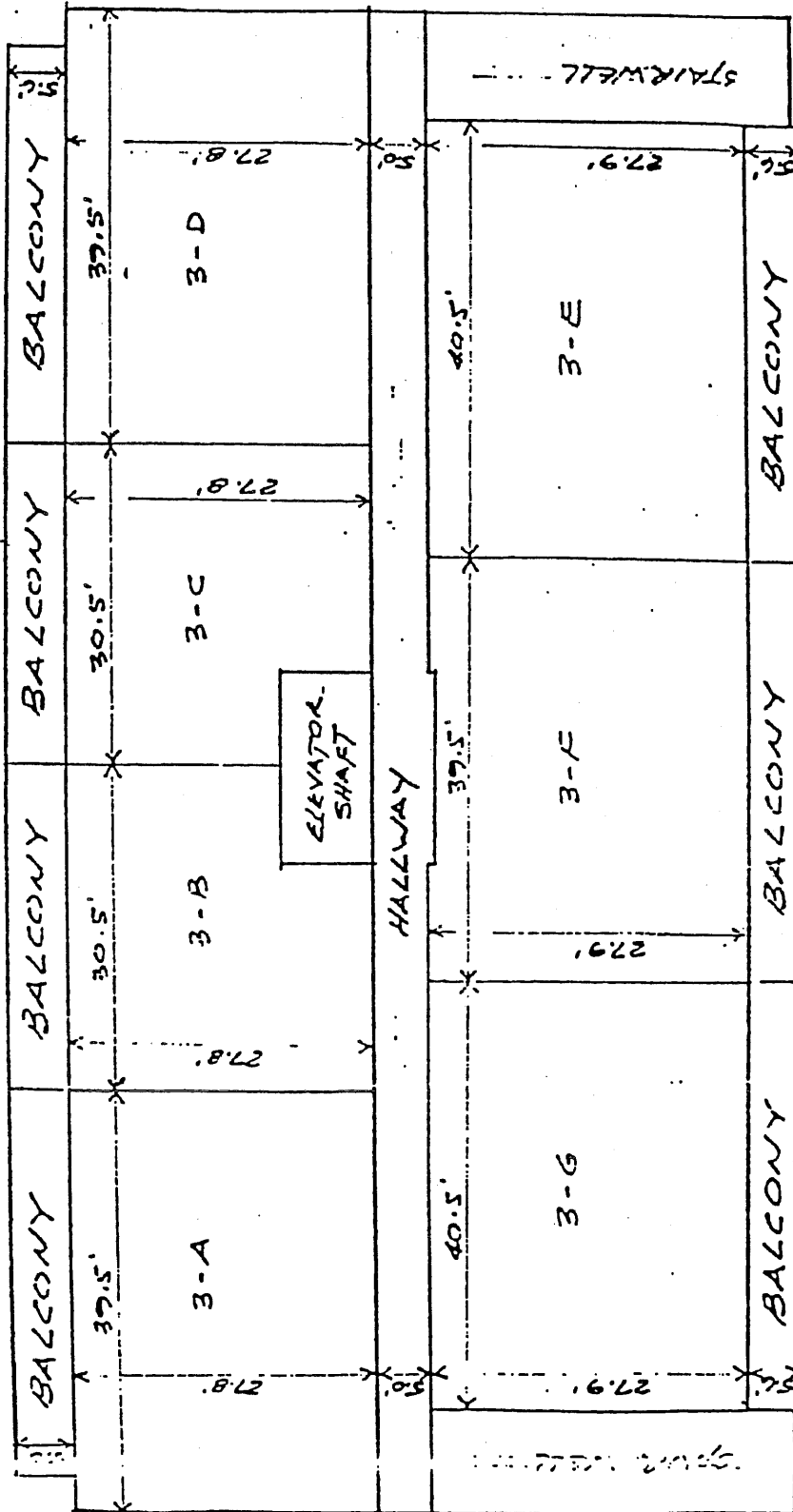
SEE TYPICAL NOTE - FIRST FLOOR



FOURTH FLOOR  
EACH UNIT HAS A BALCONY ACCESSIBLE ONLY FROM THAT UNIT (LIMITED COMMON ELEMENTS)

4770-4

SEE "TYPICAL" NOTE - FIRST FLOOR



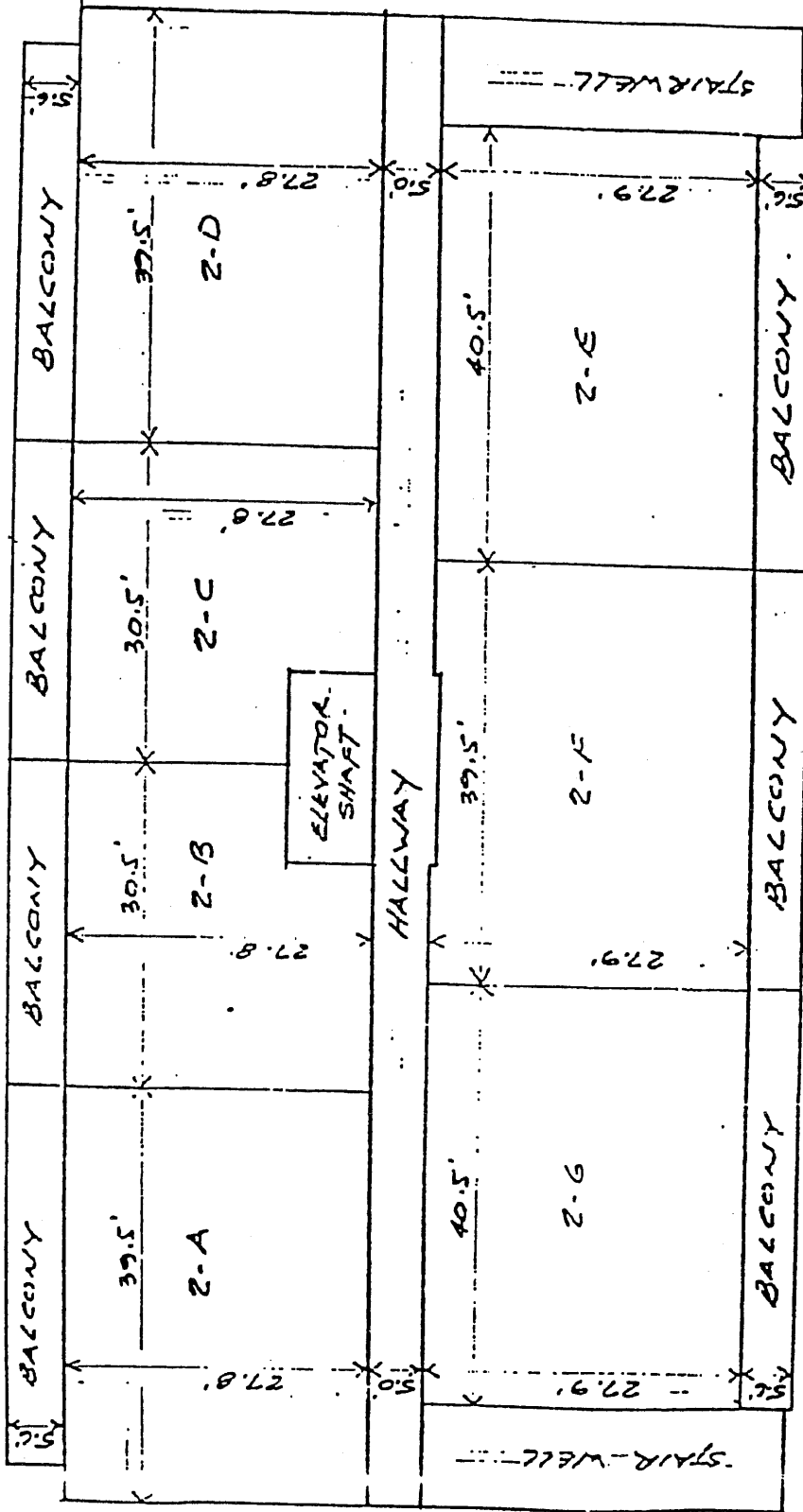
THIRD FLOOR  
EACH UNIT HAS A BALCONY ACCESSIBLE ONLY FROM THAT UNIT (LIMITED COMMON ELEMENTS)



EXHIBIT "C"  
SHEET 4 OF 16

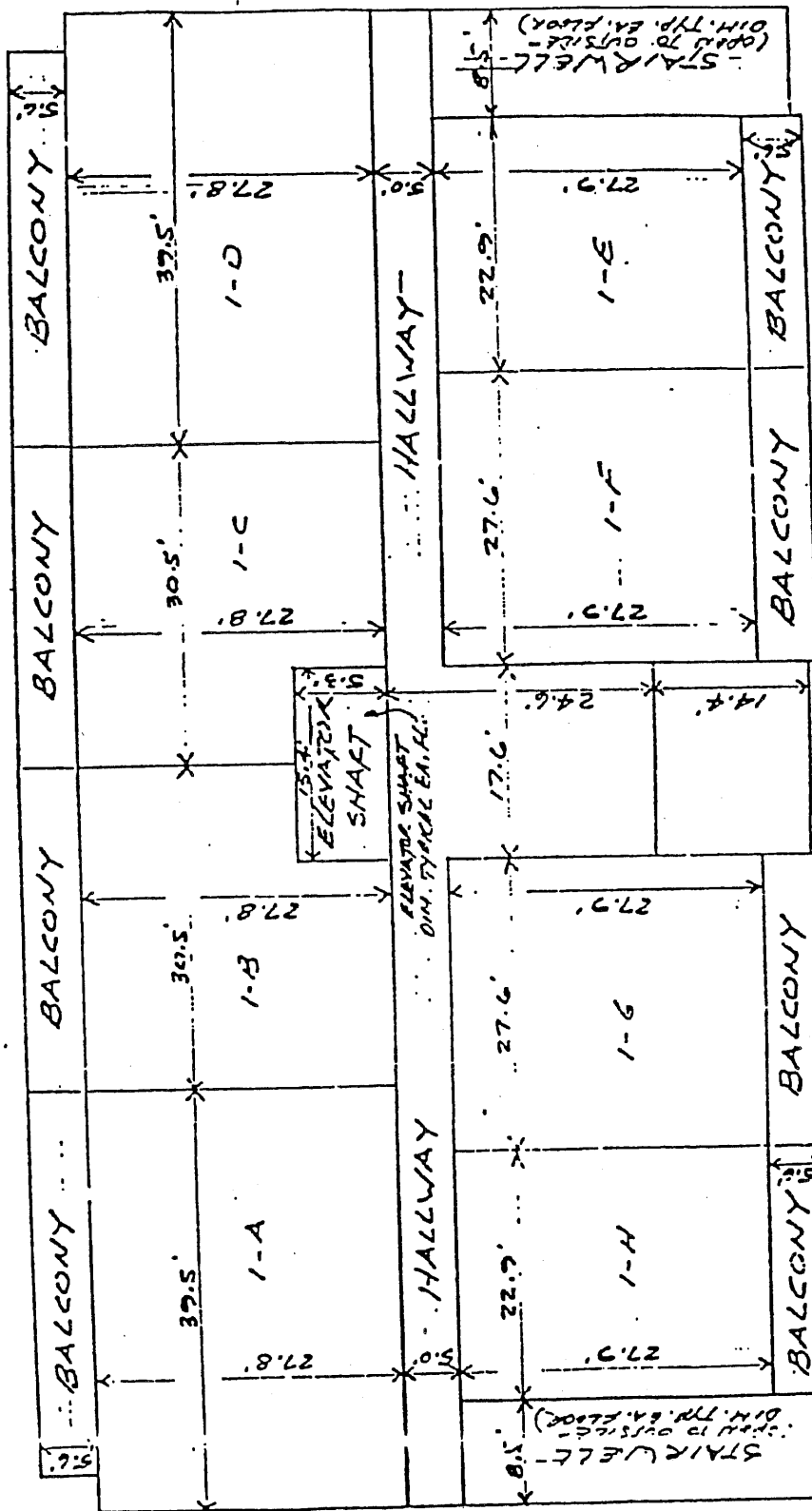
1063 PAGE 675

SEE "TYPICAL" NOTE - FIRST FLOOR.



SECOND FLOOR  
EACH UNIT HAS A BALCONY ACCESSIBLE  
ONLY FROM THAT UNIT (LIMITED COMMON  
ELEMENTS)

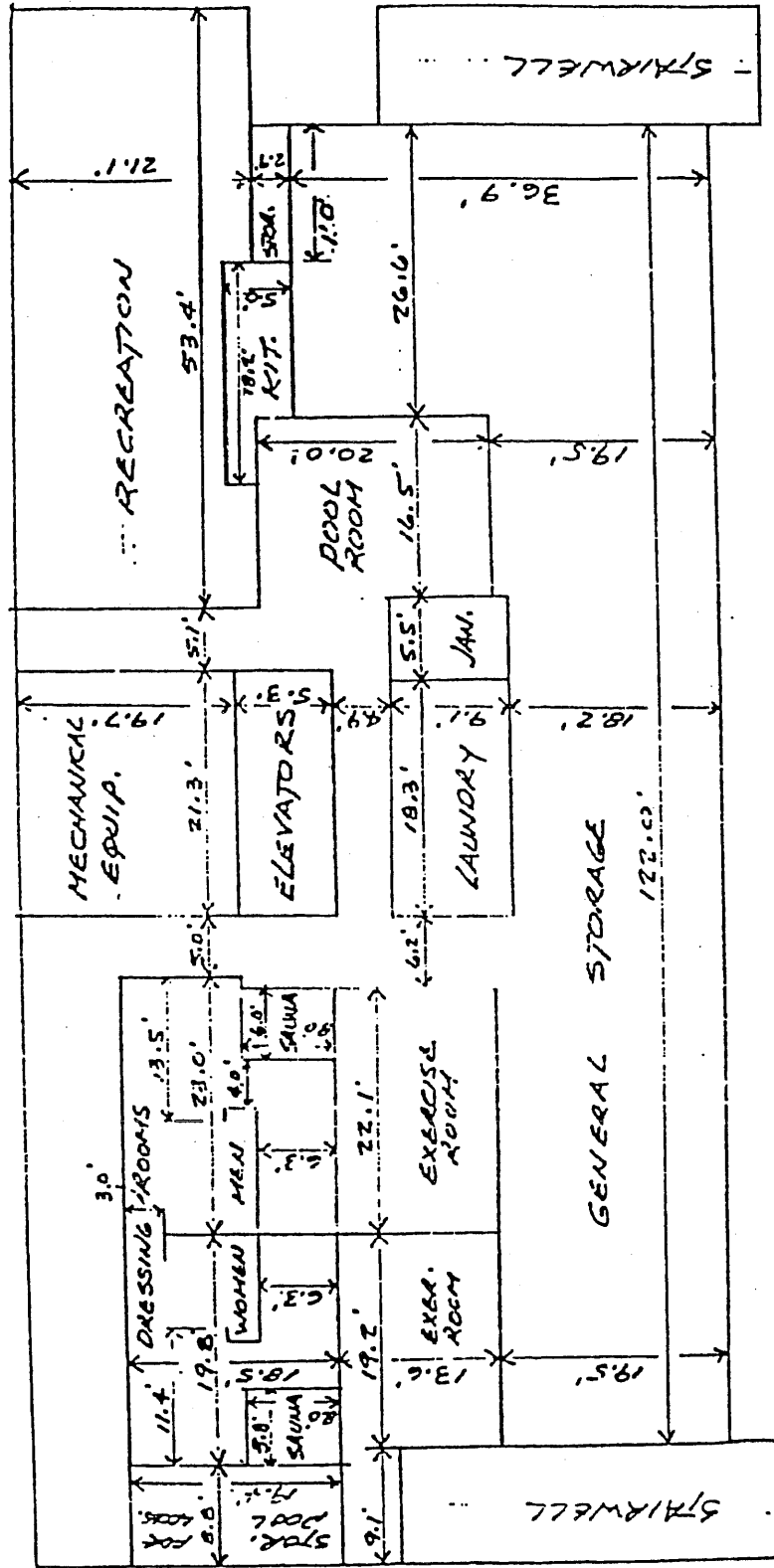
4-0117



**FIRST FLOOR**  
EACH UNIT HAS A BALCONY (LIMITED COMMON ELEMENT) ACCESSIBLE ONLY FROM THAT UNIT.

NOTES:  
REF: TO THE DECORATION OF  
COMMON ELEMENTS FOR UNIT 1-A  
+ 1-B ONLY. UNIT 1-C, 1-D, 1-E, 1-F, 1-G, 1-H, 1-I, 1-J, 1-K, 1-L, 1-M, 1-N, 1-O, 1-P, 1-Q, 1-R, 1-S, 1-T, 1-U, 1-V, 1-W, 1-X, 1-Y, 1-Z, 1-AA, 1-AB, 1-AC, 1-AD, 1-AE, 1-AF, 1-AG, 1-AH, 1-AI, 1-AJ, 1-AK, 1-AL, 1-AM, 1-AN, 1-AO, 1-AP, 1-AQ, 1-AR, 1-AS, 1-AT, 1-AU, 1-AV, 1-AW, 1-AX, 1-AY, 1-AZ, 1-BA, 1-BB, 1-BC, 1-BD, 1-BE, 1-BF, 1-BG, 1-BH, 1-BI, 1-BJ, 1-BK, 1-BL, 1-BM, 1-BN, 1-BO, 1-BP, 1-BQ, 1-BR, 1-BS, 1-BT, 1-BU, 1-BV, 1-BW, 1-BX, 1-By, 1-BZ, 1-CA, 1-CB, 1-CC, 1-CD, 1-CE, 1-CF, 1-CG, 1-CH, 1-CI, 1-CJ, 1-CK, 1-CL, 1-CM, 1-CN, 1-CO, 1-CP, 1-CQ, 1-CR, 1-CS, 1-CT, 1-CU, 1-CV, 1-CW, 1-CX, 1-Cy, 1-CZ, 1-DA, 1-DB, 1-DC, 1-DD, 1-DE, 1-DF, 1-DG, 1-DH, 1-DI, 1-DJ, 1-DK, 1-DL, 1-DM, 1-DN, 1-DO, 1-DP, 1-DQ, 1-DR, 1-DS, 1-DT, 1-DU, 1-DV, 1-DW, 1-DX, 1-Dy, 1-DZ, 1-EA, 1-EB, 1-EC, 1-ED, 1-EE, 1-EF, 1-EG, 1-EH, 1-EI, 1-EJ, 1-EK, 1-EL, 1-EM, 1-EN, 1-EO, 1-EP, 1-EQ, 1-ER, 1-ES, 1-ET, 1-EU, 1-EV, 1-EW, 1-EX, 1-Ey, 1-EZ, 1-FA, 1-FB, 1-FC, 1-FD, 1-FE, 1-FF, 1-FG, 1-FH, 1-FI, 1-FJ, 1-FK, 1-FL, 1-FM, 1-FN, 1-FO, 1-FP, 1-FQ, 1-FR, 1-FS, 1-FT, 1-FU, 1-FV, 1-FW, 1-FX, 1-Fy, 1-FZ, 1-GA, 1-GB, 1-GC, 1-GD, 1-GE, 1-GF, 1-GG, 1-GH, 1-GI, 1-GJ, 1-GK, 1-GL, 1-GM, 1-GN, 1-GO, 1-GP, 1-GQ, 1-GR, 1-GS, 1-GT, 1-GU, 1-GV, 1-GW, 1-GX, 1-Gy, 1-GZ, 1-HA, 1-HB, 1-HC, 1-HD, 1-HE, 1-HF, 1-HG, 1-HH, 1-HI, 1-HJ, 1-HK, 1-HL, 1-HM, 1-HN, 1-HO, 1-HP, 1-HQ, 1-HR, 1-HS, 1-HT, 1-HU, 1-HV, 1-HW, 1-HX, 1-Hy, 1-HZ, 1-IA, 1-IB, 1-IC, 1-ID, 1-IE, 1-IF, 1-IG, 1-IH, 1-II, 1-IJ, 1-IK, 1-IL, 1-IM, 1-IN, 1-IO, 1-IP, 1-IQ, 1-IR, 1-IS, 1-IT, 1-IU, 1-IV, 1-IW, 1-IX, 1-Iy, 1-IZ, 1-JA, 1-JB, 1-JC, 1-JD, 1-JE, 1-JF, 1-JG, 1-JH, 1-JI, 1-JJ, 1-JK, 1-JL, 1-JM, 1-JN, 1-JO, 1-JP, 1-JQ, 1-JR, 1-JS, 1-JT, 1-JU, 1-JV, 1-JW, 1-JX, 1-Jy, 1-JZ, 1-KA, 1-KB, 1-KC, 1-KD, 1-KE, 1-KF, 1-KG, 1-KH, 1-KI, 1-KJ, 1-KK, 1-KL, 1-KM, 1-KN, 1-KO, 1-KP, 1-KQ, 1-KR, 1-KS, 1-KT, 1-KU, 1-KV, 1-KW, 1-KX, 1-Ky, 1-KZ, 1-LA, 1-LB, 1-LC, 1-LD, 1-LE, 1-LF, 1-LG, 1-LH, 1-LI, 1-LJ, 1-LK, 1-LL, 1-LM, 1-LN, 1-LO, 1-LP, 1-LQ, 1-LR, 1-LS, 1-LT, 1-LU, 1-LV, 1-LW, 1-LX, 1-Ly, 1-LZ, 1-MA, 1-MB, 1-MC, 1-MD, 1-ME, 1-MF, 1-MG, 1-MH, 1-MI, 1-MJ, 1-MK, 1-ML, 1-MN, 1-MO, 1-MP, 1-MQ, 1-MR, 1-MS, 1-MT, 1-MU, 1-MV, 1-MW, 1-MX, 1-My, 1-MZ, 1-NA, 1-NB, 1-NC, 1-ND, 1-NE, 1-NF, 1-NG, 1-NH, 1-NI, 1-NJ, 1-NK, 1-NL, 1-NM, 1-NN, 1-NO, 1-NP, 1-NQ, 1-NR, 1-NS, 1-NT, 1-NU, 1-NV, 1-NW, 1-NX, 1-Ny, 1-NZ, 1-OA, 1-OB, 1-OC, 1-OD, 1-OE, 1-OF, 1-OG, 1-OH, 1-OI, 1-OJ, 1-OK, 1-OL, 1-OM, 1-ON, 1-OO, 1-OP, 1-OQ, 1-OR, 1-OS, 1-OT, 1-OU, 1-OV, 1-OW, 1-OX, 1-Oy, 1-OZ, 1-PA, 1-PB, 1-PC, 1-PD, 1-PE, 1-PF, 1-PG, 1-PH, 1-PI, 1-PJ, 1-PK, 1-PL, 1-PM, 1-PN, 1-PO, 1-PP, 1-PQ, 1-PR, 1-PS, 1-PT, 1-PU, 1-PV, 1-PW, 1-PX, 1-Py, 1-PZ, 1-QA, 1-QB, 1-QC, 1-QD, 1-QE, 1-QF, 1-QG, 1-QH, 1-QI, 1-QJ, 1-QK, 1-QL, 1-QM, 1-QN, 1-QO, 1-QP, 1-QQ, 1-QR, 1-QS, 1-QT, 1-QU, 1-QV, 1-QW, 1-QX, 1-Qy, 1-QZ, 1-RA, 1-RB, 1-RC, 1-RD, 1-RE, 1-RF, 1-RG, 1-RH, 1-RI, 1-RJ, 1-RK, 1-RL, 1-RM, 1-RN, 1-RO, 1-RP, 1-RQ, 1-RR, 1-RS, 1-RT, 1-RU, 1-RV, 1-RW, 1-RX, 1-Ry, 1-RZ, 1-SA, 1-SB, 1-SC, 1-SD, 1-SE, 1-SF, 1-SG, 1-SH, 1-SI, 1-SJ, 1-SK, 1-SL, 1-SM, 1-SN, 1-SO, 1-SP, 1-SQ, 1-SR, 1-SS, 1-ST, 1-SU, 1-SV, 1-SW, 1-SX, 1-Sy, 1-SZ, 1-TA, 1-TB, 1-TC, 1-TD, 1-TE, 1-TF, 1-TG, 1-TH, 1-TI, 1-TJ, 1-TK, 1-TL, 1-TM, 1-TN, 1-TO, 1-TP, 1-TQ, 1-TR, 1-TS, 1-TT, 1-TU, 1-TV, 1-TW, 1-TX, 1-Ty, 1-TZ, 1-UA, 1-UB, 1-UC, 1-UD, 1-UE, 1-UF, 1-UG, 1-UH, 1-UI, 1-UJ, 1-UK, 1-UL, 1-UM, 1-UN, 1-UO, 1-UP, 1-UQ, 1-UR, 1-US, 1-UT, 1-UY, 1-UZ, 1-VA, 1-VB, 1-VC, 1-VD, 1-VE, 1-VF, 1-VG, 1-VH, 1-VI, 1-VJ, 1-VK, 1-VL, 1-VM, 1-VN, 1-VO, 1-VP, 1-VQ, 1-VR, 1-VS, 1-VT, 1-VU, 1-VV, 1-VW, 1-VX, 1-Vy, 1-VZ, 1-WA, 1-WB, 1-WC, 1-WD, 1-WE, 1-WF, 1-WG, 1-WH, 1-WI, 1-WJ, 1-WK, 1-WL, 1-WM, 1-WN, 1-WO, 1-WP, 1-WQ, 1-WR, 1-WS, 1-WT, 1-WU, 1-WV, 1-WW, 1-WX, 1-Wy, 1-WZ, 1-XA, 1-XB, 1-XC, 1-XD, 1-XE, 1-XF, 1-XG, 1-XH, 1-XI, 1-XJ, 1-XK, 1-XL, 1-XM, 1-XN, 1-XO, 1-XP, 1-XQ, 1-XR, 1-XS, 1-XT, 1-XU, 1-XV, 1-XW, 1-XX, 1-Xy, 1-XZ, 1-YA, 1-YB, 1-YC, 1-YD, 1-YE, 1-YF, 1-YG, 1-YH, 1-YI, 1-YJ, 1-YK, 1-YL, 1-YM, 1-YN, 1-YO, 1-YP, 1-YQ, 1-YR, 1-YS, 1-YT, 1-YU, 1-YV, 1-YW, 1-YX, 1-Yy, 1-YZ, 1-ZA, 1-ZB, 1-ZC, 1-ZD, 1-ZE, 1-ZF, 1-ZG, 1-ZH, 1-ZI, 1-ZJ, 1-ZK, 1-ZL, 1-ZM, 1-ZN, 1-ZO, 1-ZP, 1-ZQ, 1-ZR, 1-ZS, 1-ZT, 1-ZU, 1-ZV, 1-ZW, 1-ZX, 1-Zy, 1-ZZ, 1-AA, 1-AB, 1-AC, 1-AD, 1-AE, 1-AF, 1-AG, 1-AH, 1-AI, 1-AJ, 1-AK, 1-AL, 1-AM, 1-AN, 1-AO, 1-AP, 1-AQ, 1-AR, 1-AS, 1-AT, 1-AU, 1-AV, 1-AW, 1-AX, 1-AY, 1-AZ, 1-BA, 1-BB, 1-BC, 1-BD, 1-BE, 1-BF, 1-BG, 1-BH, 1-BI, 1-BJ, 1-BK, 1-BL, 1-BM, 1-BN, 1-BO, 1-BP, 1-BQ, 1-BR, 1-BS, 1-BT, 1-BU, 1-BV, 1-BW, 1-BX, 1-By, 1-BZ, 1-CA, 1-CB, 1-CC, 1-CD, 1-CE, 1-CF, 1-CG, 1-CH, 1-CI, 1-CJ, 1-CK, 1-CL, 1-CM, 1-CN, 1-CO, 1-CP, 1-CQ, 1-CR, 1-CS, 1-CT, 1-CU, 1-CV, 1-CW, 1-CX, 1-Cy, 1-CZ, 1-DA, 1-DB, 1-DC, 1-DD, 1-DE, 1-DF, 1-DG, 1-DH, 1-DI, 1-DJ, 1-DK, 1-DL, 1-DM, 1-DN, 1-DO, 1-DP, 1-DQ, 1-DR, 1-DS, 1-DT, 1-DU, 1-DV, 1-DW, 1-DX, 1-Dy, 1-DZ, 1-EA, 1-EB, 1-EC, 1-ED, 1-EE, 1-EF, 1-EG, 1-EH, 1-EI, 1-EJ, 1-EK, 1-EL, 1-EM, 1-EN, 1-EO, 1-EP, 1-EQ, 1-ER, 1-ES, 1-ET, 1-EU, 1-EV, 1-EW, 1-EX, 1-Ey, 1-EZ, 1-FA, 1-FB, 1-FC, 1-FD, 1-FE, 1-FF, 1-FG, 1-FH, 1-FI, 1-FJ, 1-FK, 1-FL, 1-FM, 1-FN, 1-FO, 1-FP, 1-FQ, 1-FR, 1-FS, 1-FT, 1-FU, 1-FV, 1-FW, 1-FX, 1-Fy, 1-FZ, 1-GA, 1-GB, 1-GC, 1-GD, 1-GE, 1-GF, 1-GG, 1-GH, 1-GI, 1-GJ, 1-GK, 1-GL, 1-GM, 1-GN, 1-GO, 1-GP, 1-GQ, 1-GR, 1-GS, 1-GT, 1-GU, 1-GV, 1-GW, 1-GX, 1-Gy, 1-GZ, 1-HA, 1-HB, 1-HC, 1-HD, 1-HE, 1-HF, 1-HG, 1-HH, 1-HI, 1-HJ, 1-HK, 1-HL, 1-HM, 1-HN, 1-HO, 1-HP, 1-HQ, 1-HR, 1-HS, 1-HT, 1-HU, 1-HV, 1-HW, 1-HX, 1-Hy, 1-HZ, 1-IA, 1-IB, 1-IC, 1-ID, 1-IE, 1-IF, 1-IG, 1-IH, 1-II, 1-IJ, 1-IK, 1-IL, 1-IM, 1-IN, 1-IO, 1-IP, 1-IQ, 1-IR, 1-IS, 1-IT, 1-IU, 1-IV, 1-IW, 1-IX, 1-Iy, 1-IZ, 1-JA, 1-JB, 1-JC, 1-JD, 1-JE, 1-JF, 1-JG, 1-JH, 1-JI, 1-JJ, 1-JK, 1-JL, 1-JM, 1-JN, 1-JO, 1-JP, 1-JQ, 1-JR, 1-JS, 1-JT, 1-JU, 1-JV, 1-JW, 1-JX, 1-Jy, 1-JZ, 1-KA, 1-KB, 1-KC, 1-KD, 1-KE, 1-KF, 1-KG, 1-KH, 1-KI, 1-KJ, 1-KK, 1-KL, 1-KM, 1-KN, 1-KO, 1-KP, 1-KQ, 1-KR, 1-KS, 1-KT, 1-KU, 1-KV, 1-KW, 1-KX, 1-Ky, 1-KZ, 1-LA, 1-LB, 1-LC, 1-LD, 1-LE, 1-LF, 1-LG, 1-LH, 1-LI, 1-LJ, 1-LK, 1-LL, 1-LM, 1-LN, 1-LO, 1-LP, 1-LQ, 1-LR, 1-LS, 1-LT, 1-LU, 1-LV, 1-LW, 1-LX, 1-Ly, 1-LZ, 1-MA, 1-MB, 1-MC, 1-MD, 1-ME, 1-MF, 1-MG, 1-MH, 1-MI, 1-MJ, 1-MK, 1-ML, 1-MN, 1-MO, 1-MP, 1-MQ, 1-MR, 1-MS, 1-MT, 1-MU, 1-MV, 1-MW, 1-MX, 1-My, 1-MZ, 1-NA, 1-NB, 1-NC, 1-ND, 1-NE, 1-NF, 1-NG, 1-NH, 1-NI, 1-NJ, 1-NK, 1-NL, 1-NM, 1-NN, 1-NO, 1-NP, 1-NQ, 1-NR, 1-NS, 1-NT, 1-NU, 1-NV, 1-NW, 1-NX, 1-Ny, 1-NZ, 1-OA, 1-OB, 1-OC, 1-OD, 1-OE, 1-OF, 1-OG, 1-OH, 1-OI, 1-OJ, 1-OK, 1-OL, 1-OM, 1-ON, 1-OO, 1-OP, 1-OQ, 1-OR, 1-OS, 1-OT, 1-OU, 1-OV, 1-OW, 1-OX, 1-Oy, 1-OZ, 1-PA, 1-PB, 1-PC, 1-PD, 1-PE, 1-PF, 1-PG, 1-PH, 1-PI, 1-PJ, 1-PK, 1-PL, 1-PM, 1-PN, 1-PO, 1-PP, 1-PQ, 1-PR, 1-PS, 1-PT, 1-PU, 1-PV, 1-PW, 1-PX, 1-Py, 1-PZ, 1-QA, 1-QB, 1-QC, 1-QD, 1-QE, 1-QF, 1-QG, 1-QH, 1-QI, 1-QJ, 1-QK, 1-QL, 1-QM, 1-QN, 1-QO, 1-QP, 1-QQ, 1-QR, 1-QS, 1-QT, 1-QU, 1-QV, 1-QW, 1-QX, 1-Qy, 1-QZ, 1-RA, 1-RB, 1-RC, 1-RD, 1-RE, 1-RF, 1-RG, 1-RH, 1-RI, 1-RJ, 1-RK, 1-RL, 1-RM, 1-RN, 1-RO, 1-RP, 1-RQ, 1-RR, 1-RS, 1-RT, 1-RU, 1-RV, 1-RW, 1-RX, 1-Ry, 1-RZ, 1-SA, 1-SB, 1-SC, 1-SD, 1-SE, 1-SF, 1-SG, 1-SH, 1-SI, 1-SJ, 1-SK, 1-SL, 1-SM, 1-SN, 1-SO, 1-SP, 1-SQ, 1-SR, 1-SS, 1-ST, 1-SU, 1-SV, 1-SW, 1-SX, 1-Sy, 1-SZ, 1-TA, 1-TB, 1-TC, 1-TD, 1-TE, 1-TF, 1-TG, 1-TH, 1-TI, 1-TJ, 1-TK, 1-TL, 1-TM, 1-TN, 1-TO, 1-TP, 1-TQ, 1-TR, 1-TS, 1-TT, 1-TU, 1-TV, 1-TW, 1-TX, 1-Ty, 1-TZ, 1-UA, 1-UB, 1-UC, 1-UD, 1-UE, 1-UF, 1-UG, 1-UH, 1-UI, 1-UJ, 1-UK, 1-UL, 1-UM, 1-UN, 1-UO, 1-UP, 1-UQ, 1-UR, 1-US, 1-UT, 1-UY, 1-UZ, 1-VA, 1-VB, 1-VC, 1-VD, 1-VE, 1-VF, 1-VG, 1-VH, 1-VI, 1-VJ, 1-VK, 1-VL, 1-VM, 1-VN, 1-VO, 1-VP, 1-VQ, 1-VR, 1-VS, 1-VT, 1-VU, 1-VV, 1-VW, 1-VX, 1-Vy, 1-VZ, 1-WA, 1-WB, 1-WC, 1-WD, 1-WE, 1-WF, 1-WG, 1-WH, 1-WI, 1-WJ, 1-WK, 1-WL, 1-WM, 1-WN, 1-WO, 1-WP, 1-WQ, 1-WR, 1-WS, 1-WT, 1-WU, 1-WV, 1-WW, 1-WX, 1-Wy, 1-WZ, 1-XA, 1-XB, 1-XC, 1-XD, 1-XE, 1-XF, 1-XG, 1-XH, 1-XI, 1-XJ, 1-XK, 1-XL, 1-XM, 1-XN, 1-XO, 1-XP, 1-XQ, 1-XR, 1-XS, 1-XT, 1-XU, 1-XV, 1-XW, 1-XX, 1-Xy, 1-XZ, 1-YA, 1-YB, 1-YC, 1-YD, 1-YE, 1-YF, 1-YG, 1-YH, 1-YI, 1-YJ, 1-YK, 1-YL, 1-YM, 1-YN, 1-YO, 1-YP, 1-YQ, 1-YR, 1-YS, 1-YT, 1-YU, 1-YV, 1-YW, 1-YX, 1-Yy, 1-YZ, 1-ZA, 1-ZB, 1-ZC, 1-ZD, 1-ZE, 1-ZF, 1-ZG, 1-ZH, 1-ZI, 1-ZJ, 1-ZK, 1-ZL, 1-ZM, 1-ZN, 1-ZO, 1-ZP, 1-ZQ, 1-ZR, 1-ZS, 1-ZT, 1-ZU, 1-ZV, 1-ZW, 1-ZX, 1-Zy, 1-ZZ

SEE "TYPICAL" NOTE - FIRST FLOOR



BASEMENT

4770-4