

DEED LINE TABLE		CURVE INFORMATION	
LINE	DESCRIPTION	STATION	CHORD BEARING
1
2
3
4
5
6
7
8
9
10
11
12
13
14
15
16
17
18
19
20
21
22
23
24
25
26
27
28
29
30
31
32
33
34
35
36
37
38
39
40
41
42
43
44
45
46
47
48
49
50
51
52
53
54
55
56
57
58
59
60
61
62
63
64
65
66
67
68
69
70
71
72
73
74
75
76
77
78
79
80
81
82
83
84
85
86
87
88
89
90
91
92
93
94
95
96
97
98
99
100

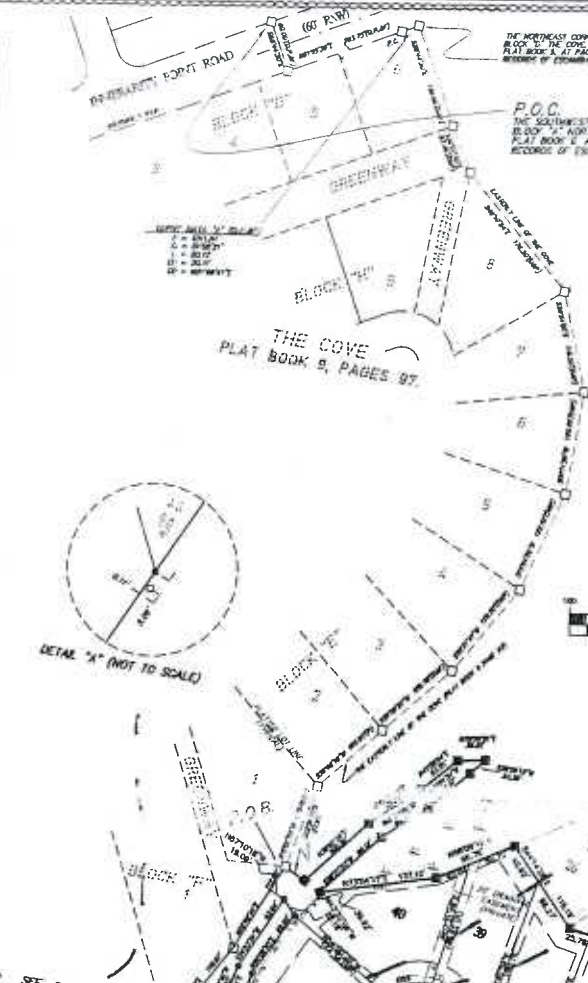
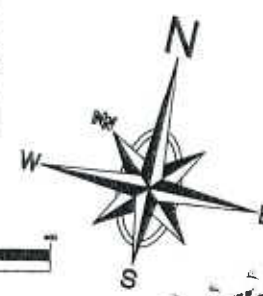
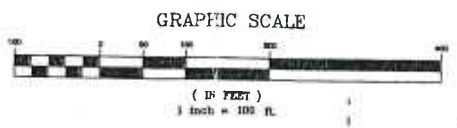
A RECORD PLAT OF RUSSELL BAYOU AT INNERARITY ISLAND PHASE 2

A SUBDIVISION IN A PORTION OF SECTION 15, TOWNSHIP 3 SOUTH, RANGE 32 WEST,
JUAN INNERARITY GRANT; ESCAMBIA COUNTY, FLORIDA.
JUNE 2001

OWNER & DEVELOPER
RUSSELL BAYOU CORPORATION
4300 BAYOU BOULEVARD, SUITE 211
PENSACOLA, FLORIDA 32505
PHONE: (850)932-9750
FAX: (850)932-8781

CENTERLINE CURVE DATA

LINE	STATION	CHORD BEARING	CHORD DISTANCE	CHORD BEARING
1
2
3
4
5
6
7
8
9
10
11
12
13
14
15
16
17
18
19
20
21
22
23
24
25
26
27
28
29
30
31
32
33
34
35
36
37
38
39
40
41
42
43
44
45
46
47
48
49
50
51
52
53
54
55
56
57
58
59
60
61
62
63
64
65
66
67
68
69
70
71
72
73
74
75
76
77
78
79
80
81
82
83
84
85
86
87
88
89
90
91
92
93
94
95
96
97
98
99
100



- DENOTES**
- BM - 4" x 4" CONCRETE MONUMENT NUMBERED AND PLACED
 - CM - 4" x 4" CONCRETE MONUMENT UNNUMBERED (FOUND)
 - IM - 1/2" CAPTED IRON ROD CORPORATE NUMBER 1002 (PLACED)
 - R/W - RIGHT OF WAY
 - P.O.C. - POINT OF COMMENCEMENT
 - P.O.B. - POINT OF BEGINNING
 - (P.I.) - PLAT INFORMATION
 - (D.O.) - DEED OR DESCRIPTION INFORMATION
 - (F.I.) - FIELD INFORMATION
 - P.C. - POINT OF CURVATURE
 - P.T. - POINT OF TANGENCY
 - L.D. - LINE DESCRIPTION
 - R. - RADIUS OF ARC
 - Δ - DELTA ANGLE
 - L. - LENGTH OF ARC
 - CH & CD - CHORD DISTANCE
 - CB - CHORD BEARING
 - P.C.C. - POINT OF COMPOUND CURVATURE
 - P.R.C. - POINT OF REVERSE CURVATURE
 - DEP - DEPARTMENT OF ENVIRONMENTAL PROTECTION
 - DEC - CORPS OF ENGINEERS
 - SE - SURVEY EASEMENT
 - NP - NON RADIAL
 - RES - RESERVATION SETBACK LINE
 - F.E.M.A. - FEDERAL EMERGENCY MANAGEMENT AGENCY
 - P.I. - POINT OF INTERSECTION
 - NOTE - NATIONAL GEODESIC VERTICAL DATUM
 - W - WETLANDS
 - CE - CONSERVATION EASEMENT
 - CA - COMMON AREA (PRIVATE)
 - CL - CENTERLINE
 - INT - INTERSECTION

NORTHWEST FLORIDA ENGINEERING & SURVEYING, INC.
A PROFESSIONAL SERVICE ORGANIZATION
1500 N. Palafox St.
Pensacola, FL 32501
(850) 432-1052

106 Willing St.
Milton, FL 32570
(850) 826-0270

NOTICE:
THIS PLAT, AS RECORDED IN ITS GRAPHIC FORM, IS THE OFFICIAL DEPICTION OF THE SURVEYED LANDS DESCRIBED HEREIN AND WILL IN NO CIRCUMSTANCES BE SUPPLANTED IN AUTHORITY BY ANY OTHER GRAPHIC OR DIGITAL FORM OF THE PLAT. THERE MAY BE ADDITIONAL RESTRICTIONS THAT ARE NOT RECORDED ON THIS PLAT THAT MAY BE FOUND IN THE PUBLIC RECORDS OF ESCAMBIA COUNTY, FLORIDA.

RUSSELL BAYOU AT INNERARITY ISLAND PHASE 2
SHEET 2 OF 2